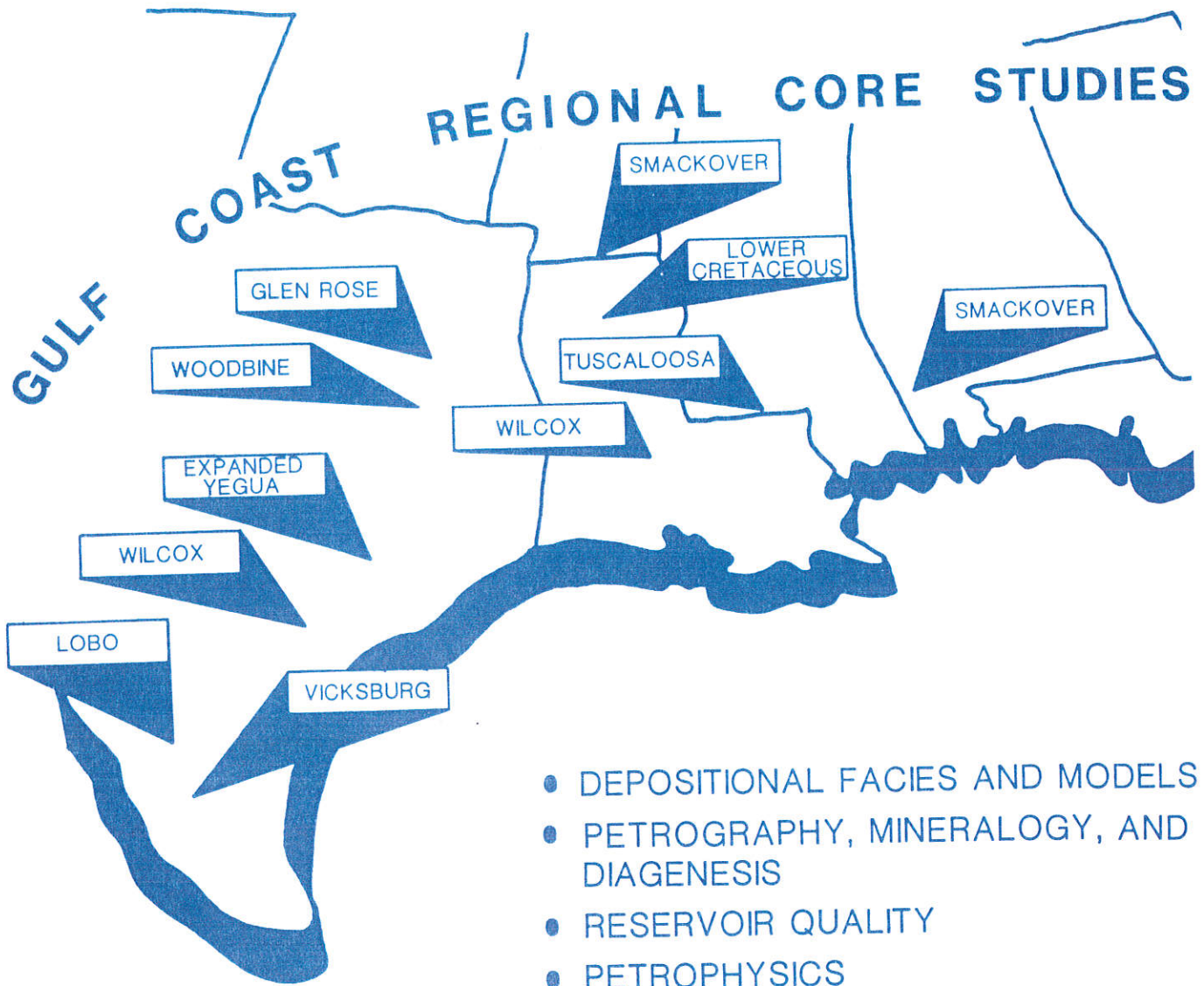


**GULF COAST ASSOCIATION  
OF GEOLOGICAL SOCIETIES**

**Transactions of the  
38th ANNUAL MEETING**

**NEW ORLEANS, LOUISIANA  
OCTOBER 19-21, 1988**





- DEPOSITIONAL FACIES AND MODELS
- PETROGRAPHY, MINERALOGY, AND DIAGENESIS
- RESERVOIR QUALITY
- PETROPHYSICS
- ENGINEERING/COMPLETION

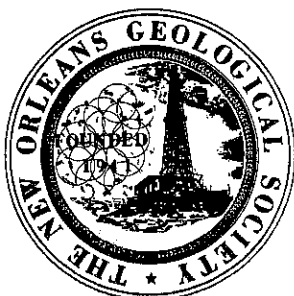
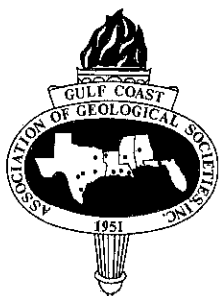
FOR INFORMATION CONTACT:

Randall S. Miller or  
 Paul J. Cernock  
 Reservoirs, Inc.  
 1151-C Brittmore Rd.  
 Houston, Texas 77043  
 (713) 932-7183

# TRANSACTIONS

## GULF COAST ASSOCIATION OF GEOLOGICAL SOCIETIES

THE GULF COAST SECTION OF  
THE AMERICAN ASSOCIATION OF PETROLEUM GEOLOGISTS



VOLUME XXXVIII, 1988

AL WEIDIE  
(GCAGS)

BARRY KOHL  
(GCS/SEPM)

RICHARD FILLON  
(GCS/SEPM)

EDITORS

Prepared for  
The Thirty-Eighth Annual Meeting of the  
GULF COAST ASSOCIATION OF GEOLOGICAL SOCIETIES  
AAPG REGIONAL MEETING  
and  
The Thirty-Fifth Annual Meeting of the  
GULF COAST SECTION OF THE  
SOCIETY OF ECONOMIC PALEONTOLOGISTS AND  
MINERALOGISTS

OCTOBER 19-21, 1988

Published at  
New Orleans, Louisiana

*Copyright 1988 by the Gulf Coast Association of Geological Societies  
No reproduction without permission of the President of GCAGS*

The Gulf Coast Association of Geological Societies acknowledges the generous support of the following companies whose financial assistance made possible the printing of these *Transactions*.

**Amoco Production Company**

**Chevron U.S.A., Inc.**

**Louisiana Land & Exploration Company**

**McMoRan Oil & Gas Company**

**Mobil Exploration & Producing U.S., Inc.**

**Shell Offshore, Inc.**

**Texaco, Inc.**



## Table of Contents

TITLE PAGE .....	i
DEDICATION TO LEE H. MELTZER .....	vii
REPORT OF THE PRESIDENT, GCAGS, James. A. Hartman .....	ix
REPORT OF THE GENERAL CHAIRMAN, Claude C. Baker .....	xi
REPORT OF THE EDITOR, GCAGS, Al Weidie .....	xi
REPORT OF THE TECHNICAL PROGRAM CHAIRMAN, J.O. Snowden .....	xi
GCAGS BOARD OF DIRECTORS - 1988 .....	xii
GCAGS STANDING COMMITTEES .....	xii
OFFICERS OF MEMBER SOCIETIES GCAGS .....	xiii
1987 BEST PAPER AWARDS, GCAGS .....	xv
BEST PAPER AND A.I. LEVORSEN MEMORIAL AWARDS, GCAGS .....	xvii
HONORARY MEMBERSHIP, GCAGS, Wilford Lee Stapp .....	xix
OFFICERS AND COMMITTEES, 38TH ANNUAL MEETING, GCAGS .....	xxi
SPEAKERS FOR PANEL DISCUSSION: <i>Opportunities - Where Next?</i> .....	xxiii
HONORARY MEMBERS AND DISTINGUISHED SERVICE AWARDS, GCAGS .....	xxv
PAST OFFICERS AND CONVENTION CHAIRMEN, GCAGS .....	xxvi
ARTICLES OF INCORPORATION AND BYLAWS, GCAGS .....	xxvii
1987-88 EXECUTIVE COUNCIL, GCS/SEPM .....	xxxi
1988 ANNUAL CONVENTION COMMITTEE, GCS/SEPM .....	xxxi
REPORT OF PRESIDENT, GCS/SEPM, Arthur S. Waterman .....	xxxii
1987 BEST PAPER AWARD, GCS/SEPM .....	xxxiii
1987 EXCELLENCE OF PRESENTATION AWARD, GCS/SEPM .....	xxxiv
BEST PAPER AWARDS, GCS/SEPM .....	xxxv
DISTINGUISHED SERVICE AWARDS, GCS/SEPM	
Michael J. Nault .....	xxxvi
Richard Paul Zingula .....	xxxvii
HONORARY MEMBERS, GCS/SEPM .....	xxxviii
PAST OFFICERS, GCS/SEPM .....	xxxviii
BYLAWS, GCS/SEPM .....	xxxix
GCAGS PUBLICATIONS LIST .....	xli
GCS/SEPM PUBLICATIONS LIST .....	xliii

### GCAGS

MIDDLE AND UPPER MIOCENE NATURAL GAS SANDS IN ONSHORE AND OFFSHORE ALABAMA, Robert M. Mink, Ernest A. Mancini, Bennett L. Bearden and Charles C. Smith .....	1
PORE TYPES AND THEIR DISTRIBUTION IN WILCOX FORMATION, CENTRAL TEXAS GULF COAST, Kung-Chou Chuang and Earle F. McBride .....	9
THE SOUTH LAKE ARTHUR FIELD AND THE OCCURRENCE OF BURIED STRUCTURES ALONG THE OLIGOCENE TREND OF SOUTHWESTERN LOUISIANA, Michael P. Prescott .....	19
ORIGIN OF CRUDE OIL IN THE WILCOX TREND OF LOUISIANA AND MISSISSIPPI: EVIDENCE OF LONG-RANGE MIGRATION, Roger Sassen, Robert S. Tye, Elizabeth W. Chinn and Rowdy C. Lemoine .....	27
SOURCE AND THERMAL HISTORY OF OILS FROM LOCKHART CROSSING, LIVINGSTON PARISH, LOUISIANA, Clifford C. Walters and Douglas D. Dusang .....	37
PETROLOGY AND DEPOSITIONAL ENVIRONMENTS OF LOWER TUSCALOOSA FORMATION (UPPER CRETACEOUS) SANDSTONES IN THE NORTH HUSTLER AND THOMPSON FIELD AREAS, SOUTH- WEST MISSISSIPPI, Douglas P. Klicman, Christopher P. Cameron and Maurice A. Meylan .....	47
DEPOSITION OF THE WOODBINE-EAGLEFORD SANDSTONES, AGGIE- LAND FIELD, BRAZOS COUNTY, TEXAS, Joseph R. DeDominic .....	61

PETROLOGY OF A PARTIALLY DOLOMITIZED RESERVOIR: BLACKJACK CREEK FIELD, SANTA ROSA COUNTY, FLORIDA, Hugh J. Mitchell-Tapping .....	71
A COMPARISON OF THE JURASSIC NORPHLET FORMATION IN MARY ANN FIELD, MOBILE BAY, ALABAMA TO ONSHORE REGIONAL NORPHLET TRENDS, Michael S. Marzano, Glenn M. Pense and Peter Andronaco .....	85
THE RODESSA FORMATION IN BOSSIER PARISH, LOUISIANA: LITHOFACIES ANALYSIS OF A HYDROCARBON-PRODUCTIVE SHALLOW WATER CLASTIC-CARBONATE SEQUENCE, Jamsie L. Roberts and Brian E. Lock .....	103
CONTROLS ON PERMEABILITY FOR UNCONSOLIDATED SANDS FROM CONVENTIONAL CORE DATA OFFSHORE GULF OF MEXICO, Michael S. Marzano .....	113
SEQUENCE STRATIGRAPHY AS A TOOL FOR INTERPRETATION OF THE COCKFIELD/YEGUA IN SOUTHWESTERN LOUISIANA, Brian E. Lock and Sheila L. Voorhies .....	123
SOME IMPLICATIONS OF REGIONAL LITHOFACIES CONTROL OF GULF COAST GEOPRESSURES, Richard P. McCulloh .....	133
THERMAL MATURITY AND KEROGEN TYPE OF THE ROBULUS "L" SANDS, OFFSHORE VERMILION PARISH, LOUISIANA, Mark A. Pasley, Ray E. Ferrell and Roger Sassen .....	139
ORGANIC-RICH SOURCE BEDS AND HYDROCARBON PRODUCTION IN THE GULF COAST REGION, Douglas F. Williams and Ian Lerche .....	145
PLIO-PLEISTOCENE EVOLUTION OF CENTRAL OFFSHORE LOUISIANA, James E. Geitgey .....	151
COMPARISON OF MODERN MISSISSIPPI FAN WITH SELECTED ANCIENT FANS, G. Shanmugam, R.J. Moiola, J.G. McPherson and S.O. O'Connell .....	157
PETROLOGY AND HYDROCARBON RESERVOIR POTENTIAL OF MISSISSIPPIAN (CHESTERIAN) SANDSTONES, BLACK WARRIOR BASIN, MISSISSIPPI, Steve B. Hughes and Maurice A. Meylan .....	167
TERRIGENOUS CLASTIC FACIES DISTRIBUTION AND SANDSTONE DIAGENESIS, SUBSURFACE LEWIS AND EVANS FORMAT UNITS (CHESTER SERIES), ON THE NORTHERN SHELF OF THE BLACK WARRIOR BASIN, Arthur W. Cleaves and David T. Bat .....	177
SUBAQUEOUS EVAPORITES OF THE BUCKNER MEMBER, HAYNESVILLE FORMATION, NORTHEASTERN MOBILE COUNTY, ALABAMA, Steven D. Mann .....	187
DEPOSITIONAL HISTORY OF THE SMACKOVER FORMATION IN SOUTH-WEST ALABAMA, D. Joe Benson .....	197
DEEP CRUSTAL STRUCTURE OF THE NORTHWESTERN GULF OF MEXICO, Yosio Nakamura, Dale S. Sawyer, F. Jeanne Shaub, Kevin MacKenzie and Jurgen Oberst .....	207
LATERAL SALT MOVEMENT AND ASSOCIATED TRAPS ON THE CONTINENTAL SLOPE OF THE GULF OF MEXICO, Pulak K. Ray .....	217
SALT TECTONICS AND CRETACEOUS UPLIFT, WESTERMOST CENTRAL MISSISSIPPI SALT BASIN, MADISON PARISH, LOUISIANA A.H.M. Shah Alam and Rex H. Pilger, Jr. ....	225
IMPACT OF HEAT FLUX ANOMALIES AROUND SALT DIAPYRS AND SALT SHEETS IN THE GULF COAST ON HYDROCARBON MATURITY: MODELS AND OBSERVATIONS, J.J. O'Brien and I. Lerche .....	231
CRETACEOUS AND TERTIARY COMPRESSIONAL TECTONICS AS THE CAUSE OF THE SABINE ARCH, EAST TEXAS AND NORTHWEST LOUISIANA, Mary L.W. Jackson and Stephen E. Laubach .....	245
TECTONIC SUBSIDENCE, CRUSTAL THINNING AND PETROLEUM GENERATION IN THE JURASSIC TREND OF MISSISSIPPI, ALABAMA AND FLORIDA, B.W. Driskill, J.A. Nunn, R. Sassen and R.H. Pilger, Jr. ....	257
STYLE OF FAULTS AND ASSOCIATED FRACTURES IN AUSTIN CHALK, NORTHERN EXTENSION OF THE BALCONES FAULT ZONE, CENTRAL TEXAS, Donald F. Reaser and Edward W. Collins .....	267
FRACTURING IN THE UPPER CRETACEOUS SELMA GROUP CHALKY MARLS, INNER COASTAL PLAIN OF ALABAMA: STRATIGRAPHIC (FACIES) CONTROL OF JOINT DEVELOPMENT AND REGIONAL JOINT-STRIKE ORIENTATIONS, Enid Bittner, David T. King, Jr. and Ira Holston .....	277
STRATIGRAPHIC AND STRUCTURAL INTERPRETATIONS USING DIFFRACTION SEISMOGRAMS; Richard K. Snavely and A.K.M. Sarwar .....	283

## GCS/SEPM

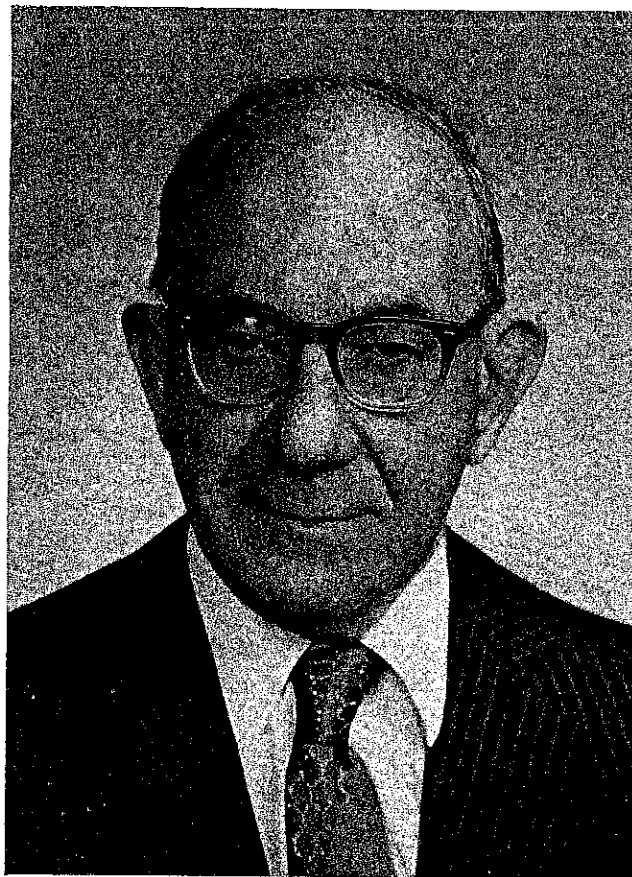
LITHOFACIES CHARACTERISTICS OF SHALLOW EXPANDED AND CONDENSED SECTIONS OF THE LOUISIANA DISTAL SHELF AND UPPER SLOPE, Harry H. Roberts and James M. Coleman .....	291
DISCHARGE-SEDIMENT DYNAMICS OF THE LOWER MISSISSIPPI RIVER, Joann Mossa .....	303
TRANSGRESSIVE EVOLUTION OF THE CHANDELEUR ISLANDS, LOUISIANA, John R. Suter, Shea Penland, S.J. Williams and Jack L. Kindinger .....	315
SHORT-TERM CHANGES IN BEACH MORPHOLOGY ON THE LOUISIANA COAST, L.D. Nakashima .....	323
BARRIER ISLAND EROSION AND PROTECTION IN LOUISIANA: A COASTAL GEOMORPHOLOGICAL PERSPECTIVE, Shea Penland and John R. Suter .....	331
RECENT MORPHOLOGIC CHANGES AT DOG KEY PASS, MISSISSIPPI: THE FORMATION AND DISAPPEARANCE OF THE ISLE OF CAPRICE, James B. Rucker and Jesse O. Snowden .....	343
THE SEDIMENTARY TEXTURE, STRUCTURE, AND FRAMEWORK OF LACUSTRINE DELTAIC DEPOSITS IN THE ATCHAFALAYA BASIN, Phyllis L. Breland, D.M. Patrick and L.M. Smith .....	351
CLAY-MINERAL SEGREGATION BY DIFFERENTIAL FLOCCULATION: JOURDAN RIVER/ST. LOUIS BAY ESTUARY, HANCOCK COUNTY, MISSISSIPPI, Gregory J. McRae and Jesse O. Snowden .....	361
NEW BEACH RIDGE TYPE: SEVERELY LIMITED FETCH, VERY SHALLOW WATER William F. Tanner and Suleyman Demirpolat .....	367
EXPOSURE OF LATE PLEISTOCENE MISSISSIPPI RIVER MEANDER-BELT FACIES AT MT. PLEASANT, LOUISIANA, Whitney J. Autin, A. Todd Davison, B.J. Miller, W.J. Day and Brian A. Schumacher .....	375
SEISMIC FACIES ANALYSIS OF ENTRENCHED VALLEY-FILL: A CASE STUDY IN THE GALVESTON BAY AREA, TEXAS, Wendy C. Smyth, John B. Anderson and Mark A. Thomas .....	385
CALCIUM CARBONATE SEDIMENTATION ON THE NORTHWESTERN GULF OF MEXICO MARGIN: A NEW TOOL FOR CHEMICAL STRATIGRAPHY AND DEPOSITIONAL MODELLING, Douglas F. Williams, Dwight M. Trainor, Thomas Guilderson, Ronald Gamble and Jeffrey Corbin .....	395
THE EFFECT AND MECHANISM OF EPISODIC SEA LEVEL EVENTS: THE RECORD PRESERVED WITHIN LATE WISCONSINAN-HOLOCENE INCISED VALLEY- FILL SEQUENCES, Mark A. Thomas and John B. Anderson .....	399
LATE QUATERNARY DEPOSITIONAL FRAMEWORK OF THE LOUISIANA CONTINENTAL SHELF AND UPPER CONTINENTAL SLOPE, James M. Coleman and Harry H. Roberts .....	407
SUBSURFACE GEOLOGY OF THE LATE TERTIARY AND QUATERNARY DEPOSITS, COASTAL LOUISIANA AND THE ADJACENT CONTINENTAL SHELF, E. McFarland, Jr. and D.O. LeRoy .....	421
REFINEMENT AND SPECTRAL ANALYSIS OF PLIO-PLEISTOCENE OXYGEN AND CARBON ISOTOPIC RECORDS, Dwight M. Trainor, Douglas F. Williams, and Ian Lerche .....	435
A GEOMORPHOLOGIC MODEL FOR MISSISSIPPI DELTA EVOLUTION, Ron Boyd and Shea Penland .....	443
PALEOCENE SEQUENCE STRATIGRAPHY OF SOUTHWESTERN ALABAMA, Ernest A. Mancini and Berry H. Tew .....	453
NEWTONIA FIELD: A MODEL FOR MID-DIP LOWER TUSCALOOSA RETROGRADE DELTAIC SEDIMENTATION, Michael D. Hogg .....	461
DEPOSITIONAL HISTORY OF THE SUNNILAND LIMESTONE (LOWER CRETACEOUS) RACCOON POINT FIELD, COLLIER COUNTY, FLORIDA, James A. Richards .....	473
PLIOCENE AGE OF COASTAL UNITS, NORTHEASTERN GULF OF MEXICO, Ervin G. Otvos .....	485
SEDIMENT ALTERATION AND CLAY MINERAL DIAGENESIS IN A REGIONAL GROUND WATER FLOW SYSTEM, MISSISSIPPI GULF COASTAL PLAIN, Jeffrey S. Hanor and Kathleen M. McManus .....	495
THE GEOCHEMISTRY OF SALINE FORMATION WATERS, MIOCENE OFFSHORE LOUISIANA, L.S. Land, G.L. Macpherson and L.E. Mack .....	503
PETROLOGY, STABLE ISOTOPE GEOCHEMISTRY AND DIAGENESIS OF MIOCENE SANDSTONES, VERMILION BLOCK 31, OFFSHORE LOUISIANA, E.F. McBride, L.S. Land, T.N. Diggs and L.E. Mack .....	513
SALT DOME RELATED DIAGENESIS OF MIOCENE SEDIMENT; BLACK BAYOU FIELD, CAMERON PARISH, LOUISIANA, William R. Leger .....	525
INNER-SHELF HARBOTTOM AREAS, NORTHEASTERN GULF OF MEXICO, William W. Schroeder, Albert W. Shultz and John J. Dindo .....	535
DIAGENESIS OF THE UPPER JURASSIC NORPHLET FORMATION, MOBILE AND BALDWIN COUNTIES AND OFFSHORE ALABAMA, R.L. Vaughan, Jr. and D. Joe Benson .....	543
BORON MINERALIZATION IN THE LOUANN SALT AND NORPHLET SHALE CLARKE COUNTY, ALABAMA, Wm. B. Simmons .....	553

GULF COAST FORMATION WATERS AS POTENTIAL SOURCE FOR CAP ROCK-HOSTED SULFIDE MINERALIZATION, HOCKLEY DOME, TEXAS, William N. Agee, Jr. ....	561
LEAD-ZINC-STROMTIUM MINERALIZATION IN LIMESTONE CAPROCK FROM TATUM SALT DOME, MISSISSIPPI, James A. Saunders .....	569
<b>POSTER ABSTRACTS</b>	
DRAINAGE LINEAMENTS IN LATE QUATERNARY SEDIMENTS ASCENSION AND EAST BATON ROUGE PARISHES, LOUISIANA, Richard U. Birdseye, Gregory L. Christians and John L. Olson .....	577
BENTHIC FORAMINIFERAL ZONATION ON THE NORTHWESTERN GULF OF MEXICO SLOPE: A CLOSE LOOK, Richard A. Denne and Barun K. Sen Gupta .....	578
VARIATION OF "GROWTH FAULT" STRUCTURAL STYLES IN THE TEXAS GULF COAST BASIN, Thomas E. Ewing .....	579
ENVIRONMENTAL SEDIMENTOLOGY OF THE PONTCHARTRAIN- MAUREPAS ESTUARINE COMPLEX, George C. Flowers, Andrew W. Durfee, and Wayne C. Isphording .....	579
POLLEN, SPORES AND THE DALTON COAL (UPPER PENNSYLVANIAN) OF NORTHERN TEXAS, Judith A. Gennett, Robert L. Ravn and Anne Raymond .....	580
RECENT SEDIMENTARY ENVIRONMENT OF PENSACOLA BAY, FLORIDA, Sheri M. George, Wayne C. Isphording and Maurice A. Meylan .....	581
TECTONIC IMPLICATIONS OF THE POLYDEFORMED MIDDLE PROTEROZOIC COAL CREEK SERPENTINITE, LLANO UPLIFT, TEXAS, Gretchen M. Gillis .....	582
TECTONIC ORIGIN OF MONTGOMERY TERRACE SCARP OF SOUTH- WESTERN LOUISIANA, P.V. Heinrich .....	582
USE OF HIGH-RESOLUTION GEOPHYSICAL AND GEOTECHNICAL TECHNIQUES FOR SELECTING ARTIFICIAL REEF SITES ON THE LOUISIANA CONTINENTAL SHELF, David L. Pope and John B. Wagner .....	583
SEDIMENTATION STYLES AND ACCUMULATION RATES ON THE LOUISIANA SHELF AND SLOPE: STACKED CONDENSED AND EXPANDED SECTIONS, Harry H. Roberts and James M. Coleman .....	584
LATE QUATERNARY SEDIMENTOLOGY OF THE CONTINENTAL SLOPE (LONG. 94-95), NORTHWEST GULF OF MEXICO, Will M. Satterfield and E. William Behrens .....	585
QUANTITATIVE PALEOBATHYMETRY USING GEOCHEMISTRY AND SHAPE ANALYSIS OF BENTHIC FORAMINIFERA, OFFSHORE GULF OF MEXICO, Douglas F. Williams, Anthony C. Gary and Nancy Healy-Williams .....	586
DEPOSITIONAL ANALYSIS OF THE HILL SAND OF THE RODESSA FORMATION (LOWER CRETACEOUS) IN THE NORTH SHONGALOO-RED ROCK FIELD WEBSTER PARISH, LOUISIANA, John A. Adamick and Austin A. Sartin .....	587
SHORELINE DEPOSITIONAL ENVIRONMENTS OF THE GLEN ROSE FORMATION (LOWER CRETACEOUS) IN THE TYPE AREA, SOMERVELL AND HOOD COUNTIES, TEXAS, Gail R. Bergan .....	588
RECOGNITION OF DEPOSITIONAL ENVIRONMENTS USING PROGRAMMED PYROLISIS, Elizabeth W. Chinn, Rowdy C. Lemoine and Roger Sassen .....	589
CEMENTATION AND COMPACTION IN THE TUSCUMBIA LIMESTONE (MISSISSIPPIAN) OF NORTHERN ALABAMA, D. Ramsey Fisher .....	590
PETROGRAPHIC AND GRAPHIC ANALYSIS OF SHELF-EDGE POROSITY IN THE LOWER CRETACEOUS SILGO FORMATION SOUTH TEXAS, B.L. Kirkland .....	590
SIGNIFICANCE OF NATURAL AND CORING-INDUCED FRACTURES IN THE TRAVIS PEAK FORMATION FOR RESERVOIR STIMULATION, Stephen E. Laubach .....	591
DEPOSITIONAL MODEL FOR LIGNITE OCCURRENCE IN THE WILCOX GROUP OF SOUTH-CENTRAL MISSISSIPPI, Walter L. O'Niell .....	592
DEPOSITIONAL AND DIAGENETIC CONTROLS ON THE RESERVOIR QUALITY OF NORPHLET SANDSTONE MARY ANN GAS FIELD, OFFSHORE ALABAMA, Glenn M. Pense .....	593
THE NORPHLET FORMATION OF PANHANDLE FLORIDA, Greg W. Scott .....	594
PETROLOGY OF EOCENE ROCKS, SOUTHEAST GEORGIA COASTAL PLAIN, Paul A. Thayer, and James A. Miller .....	595
THE LOWER CRETACEOUS-UPPER JURASSIC CARBONATE COMPLEX OF THE SOUTHERN MARGIN OF THE FLORIDA-BAHAMA PLATFORM IN NORTHERN CUBA, George O. Winston .....	596
A CATHODOLUMINESCENCE AND FLUID-INCLUSION STUDY OF UPPER SMACKOVER CEMENTS, BOYD HILL FIELD MILLER COUNTY, ARKANSAS, Leonard M. Young, Oliver R. Boyd, and Shirley A. Bingham .....	597
ADVERTISERS' INDEX .....	607



# TRANSACTIONS VOLUME

Dedicated to



LEE HILLARD MELTZER

This volume, the *Transactions* of the 38th Annual Meeting of the Gulf Coast Association of Geological Societies, is dedicated to Lee Hillard Meltzer, recognizing the breadth and quality of his contributions to our profession.

Lee has given 52 years of applied scientific curiosity to the search for and definition of oil and gas occurrences and this quest goes on. His professional life spans our 20th century measurement revolution. Meltzer initially, for those wells that were electrically surveyed, examined pen recorded logs, many with only one resistivity measurement since the lateral curve was a new addition. Today at least fifteen log families are offered with a plurality of combination, recording, and measurement options, digitally manipulated for micro definitions. His early exposure to the seismic method provided an even greater vista of change — to our state of the art 3-D creations of mathematical ingenuity. With an awareness that the media is not the message, the continual absorption and thoughtful assessment of this evolving, technical spectrum that Lee has maintained is an achievement that few of us can hope to match.

Lee was born in Chicago, Illinois in 1914 and became a student at the University of Chicago in 1932. His parents, who came from eastern Europe as children, provided a most supportive base, a relaxed and curious father and a mother who affectionately insisted on her children achieving all that was possible in their goals. This close knit relationship, with traditional religious emphasis, inculcated scholastic determination, dedicated honesty, and sympathetic awareness of his fellow humans — traits still pre-eminent today.

Lee was a student during the Depression and was tireless in combining part-time work and scholarship assistance. His first exposure to geology, a field trip as part of a physical science survey course, seized his imagination and he switched from a potential journalist to our science. The instrument of this transfer was Prof. J. Harlan Bretz and he became the major stimulant for Lee's academic sojourn. Meltzer was awarded his B.S. in geology in four years, a rare accomplishment for a self-financing student in that time, when many educational paths had repeated interruptions.

A synopsis of Lee's working career starts with three months as a geophysical computer on a Shell Oil Company seismic crew. His goals were more specifically geological and he accepted employment with the United Gas Corporation in the fall of 1936. Initially a scout, he was assigned to Beeville, Texas, and commenced the transition to his ultimate profession, acquiring subsurface procedures and evaluation capability along with mingling in a life style contrasting substantially with urban Chicago. In 1941, he moved to Shreveport, Louisiana, United's home office, and was directly assigned to gas reserve evaluation, managed by John Scopes. This required interpretation and critical analysis of the larger fields in South Louisiana, a major resource base for United Gas. His conclusions were utilized for presentation to the Federal Power Commission and through the 1940's, Lee achieved a recognized status as an expert with diverse exposure to producing, transmission, and governmental entities. His colleagues and seniors across this industry segment acknowledged this and he was appointed Vice Chairman of the Gas Reserves Committee of the American Gas Association. He became manager of the geological exploration section of United Gas in 1950.

Lee was 42 years old in 1956. He had a secure job with industry recognition and peer respect. As a product of Depression era struggling, a pathway of security could not lightly be put aside. He wanted to be a successful consultant with "a regionally solid practice of broad scope," his own words, but the surgery was a difficult decision. Doris, his greatest Shreveport achievement whom he married in 1945, asked him to do it or quit talking about it. Thus, on a Friday afternoon he walked into the vice president's office after a colleague's resignation had been received and said: "I'm quitting, too." Shortly thereafter the Meltzers moved to New Orleans.

A constant accompaniment of Lee's geological life has been his commitment to our professional societies and associations commencing in the Beeville period with the San Antonio Society. These include the local groups, San Antonio, Shreveport and New Orleans. At the regional and national levels one lists the Gulf Coast Association of Geological Societies, the American Association of Petroleum Geologists, the Geological Society of America, the American Institute of Professional Geologists, the Society of Independent Professional Earth Scientists, the Society of Petroleum Engineers of AIME, the Society of Petroleum Evaluation Engineers, the American Arbitration Association, and the American Association for Advancement of Science. His many roles as officer, committee member, chairman, and awardee defy enumeration. It is appropriate to note that he has been president of the New Orleans Geological Society, the Gulf Coast Association of Geological Societies, and the Division of Professional Affairs of the AAPG, and is an honorary life member of the New Orleans Geological Society, an honorary member of the Gulf Coast Association of Geological Societies and an honorary member of the American Association of Petroleum Geologists. Particularly significant to the GCAGS are his inputs as Convention Chairman in 1962, Chairman of the Special Projects Committee which achieved the Gulf Coast Tectonic Map, and Chairman of the Awards and Nominations Committee. His publications include "Prediction of Availability of Natural Gas," *Transactions AIME-SPE*, V. 198 (1953); "The Geology of West Bastian Bay Field, Plaquemines Parish, La.," *GCAGS Transactions*, V.16 (1966); and "The Stratigraphic Factors in Hydrocarbon Reservoirs of the Gulf Coast," *GCAGS V.6* - September 1986 (Compiled).

The foregoing compilation smacks of a personnel file extract. The whole man is outlined but not described. Lee and Doris have four children, two sons and two daughters with six grandchildren. They are intellectually active people, pursuing new interests in reading, classical music, and travel. A trip incorporates a predeparture historical study, a current political and cultural synopsis, and the geological lineaments of the area. Lee is a committed member of his faith and is on the Board of Directors of the Jewish Endowment Foundation and the Congregation Gates of Prayer. He is a quizzical and intriguing luncheon companion with satirical wit enlivening the mundane. A conversation can compare clastic deposition in Wyoming with Mississippi, leap to French culture of the Napoleonic era, and wander through the mazes of Louisiana politics.

It is most appropriate that the Gulf Coast Association of Geological Societies dedicates this *Transactions* volume to Lee. His concepts have been formative, his direction provides constant improvement, and his thoughts are continually current. It is a pleasure to recognize this outstanding geologist.

**R. W. Boebel**

# REPORT OF THE PRESIDENT GULF COAST ASSOCIATION OF GEOLOGICAL SOCIETIES, INC.



JAMES A. HARTMAN

Welcome to New Orleans, the site of the first annual GCAGS meeting in 1951. This year is the sixth time the Association has met in New Orleans in its 38-year history, and once again, the New Orleans Geological Society is host for this convention. This year's *Transactions* are dedicated to Lee H. Meltzer. Lee has been a staunch supporter of the profession in general and GCAGS in particular, and is most deserving of this award.

The Gulf Coast Association of Geological Societies, Inc. is a unique organization. One of seven sections of AAPG, it is the largest. The object of GCAGS is "to provide for discussion and publication of papers on subjects and problems coming within the scope of the geological profession and with particular emphasis on Gulf Coast geology." To accomplish this objective, GCAGS holds an annual meeting at which papers and posters are presented. In addition, each paper and an abstract for each poster is printed in the *Transactions*. GCAGS is the only Section of AAPG to do this. The *Transactions* are the most important source of geological data for a geologist working in the Gulf Coast. The 1988 *Transactions*, Volume 38, add to this long-standing tradition.

This year's convention has been in the planning stage for the past several years. The Steering Committee consists of Claude C. Baker, General Chairman; Robert W. Sabate, Secretary and Vice Chairman; Janet E. Bailey, Treasurer; and myself. Claude Bob, and Janet should be commended for so generously giving their time to attend the many meetings of the committee. Early in the planning stage it was decided that NOGS would handle all functions, except for the exhibits which were handled by AAPG. To accomplish this it was essential that outstanding chairmen and chairwomen be selected. Our General Chairman, Claude Baker, accomplished this task admirably. These chairmen and chairwomen, along with their committees, are listed elsewhere in the *Transactions*. Thank them when you meet them because the success of this convention is directly the result of their efforts. One name is missing from that list — Bruce Lemmon, AAPG Exhibits Manager. Thank him, too.

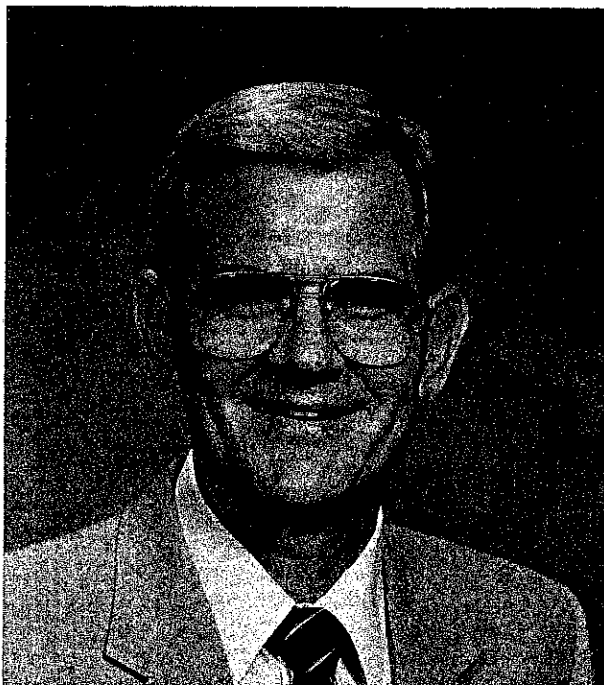
GCAGS is governed by a Board of Directors consisting of the President, Vice President, Past President and one representative from each member society. The Secretary, Treasurer and the GCAGS Representative to the Advisory Council of AAPG are ex officio, nonvoting members of the Board. Two Board meetings are held each year, one at the Annual Meeting and the other at midyear. Committee chairmen attend these meetings, also. The current committees and their chairmen are: Representative to the AAPG Advisory Council and Publications, Robert E. Boyer; Awards and Nominations, Steward Chuber; Finance, Gerald A. Cooley; Financial Aid to Students, Richard W. Boebel; Historical, David E. Pope; Long Range Planning, Edward C. Roy, Jr.

Throughout the years, the Association has operated very effectively in what a church group I belong to refers to as "disorganized unity." This probably has been the greatest strength of the organization. New people with new ideas have come forth every year, and when one examines the financial balance sheet of the Association the results are obvious. GCAGS is in excellent financial condition, with a surplus of about \$500,000. The Board has authorized the Association to spend annually an amount no greater than the interest received on this surplus. At the midyear meeting Dick Boebel's recommendation to support 20 graduate students in the amount of \$18,810 was approved. The number of requests for aid was only about half those of the previous year, clearly indicating the depressed state of enrollment in Geology.

Based on the recommendation of the Long Range Planning Committee, the midyear Board meeting was extended to two days for the purpose of making an in-depth study of the Association and to begin defining some long-term goals. Representatives of nine of the twelve affiliated societies were present. John Amoroso, Clyde Harrison, and Lee Meltzer, major contributors to GCAGS over the years, were invited to provide some historical perspective. Items discussed included the need for an executive director; the responsibilities of the member societies; convention planning and scheduling; investments and budgetary requirements; current

and possible publications; improvements in the GCAGS Financial Aid to Students Program; the role GCAGS can play in assisting member societies with their recommendations to AAPG for awards and officer nominations; and the preparation of a convention manual. Although few final decisions were made, various items were assigned to different committees that will bring forth recommendations at the annual meeting in October. Bob Boyer made a plea for volunteers to prepare additional volumes for the highly successful *Readings in Gulf Coast Geology* Series. If you would like to volunteer, please contact Bob. You will hear more from this meeting of the Long Range Planning Committee as time goes on.

Finally, I would like to thank you for allowing me to be your President. It was a most pleasurable experience, especially in view of the fine people who served as my Association officers, the Board of Directors, the GCAGS Committee chairmen and the General Chairman and his convention committees. I hope we have left the Association in as good as or possibly a little better condition than when we took office. I wish GCAGS, a great geological organization, all the best in the years ahead.



**VICE-PRESIDENT**  
William R. Payne



**SECRETARY**  
Robert W. Sabaté



**TREASURER**  
Janet E. Bailey

## REPORT OF THE GENERAL CHAIRMAN



**CLAUDE C. BAKER**

On behalf of the New Orleans Geological Society, I am pleased to welcome you to New Orleans and the 38th annual meeting of the Gulf Coast Association of Geological Societies.

Preparation for this convention began more than two years ago. Our goal was to present a convention that provides an interesting and informative technical program, as well as an entertainment schedule befitting America's Fun City. The chairmen and members of some twenty-seven convention committees have worked tirelessly to achieve this goal.

This year we are trying something a bit different. Our opening session will be highlighted by a panel discussion of the convention theme. The panel will be moderated by Lee Meltzer, Consulting Geologist, and will consist of William Wallace, Texaco; Paul Dudley, formerly with CNG; Henry Goodrich, Goodrich Oil Company; and Bill Fisher, Bureau of Economic Geology and the University of Texas; as representatives of a major oil company, a large independent, a small independent, and government/academia, respectively.

We are offering an excellent program of technical papers to be presented at sessions of the GCAGS and GCS/SEPM. In addition, we are offering two poster sessions which we hope will become a regular feature on the GCAGS program. Convention delegates also have a choice among two short courses and three field trips.

Our entertainment activities include the Icebreaker Cocktail Party in the exhibit area on Wednesday night, a Cajun dinner dance at the Audubon Zoological Gardens on Thursday night, and a Mississippi River cruise aboard the sternwheeler Natchez on Friday night. Delegates also can choose any of six sporting events: a fishing trip, a golf tournament, a tennis tournament, a racquetball tournament, a 5K run, or a sailing regatta. Spouses can also choose from a full schedule of arranged activities.

I would like to express my sincere thanks to the convention committee chairmen and members who gave so willingly of their time to make this convention a reality. I was indeed fortunate to have had such a pool of talent from which to select committee chairmen for the GCAGS. All functions and activities were arranged by the New Orleans Geological Society except the exhibits, which were handled by the AAPG. I extend my thanks to Bruce Lemmon, AAPG Exhibits Manager, who did an excellent job for us.

I thank Jim Hartman, GCAGS President, who invited me to serve as General Chairman. As a result, I had the opportunity to be associated with an outstanding group of dedicated people. Jim offered many helpful suggestions and was continually supportive. I want to give special thanks to Bob Sabate, a lifelong friend who willingly served as GCAGS Vice Chairman as well as Secretary and legal counsel. Bob helped

from the initial planning stage; he assumed the responsibility for many arduous tasks and saw each one through to completion. I also thank Janet Bailey, GCAGS Treasurer, for all of her helpful counsel. The four of us met innumerable times as the Steering Committee to identify and to tackle problems, to gauge our progress, or to plot our next course of action.

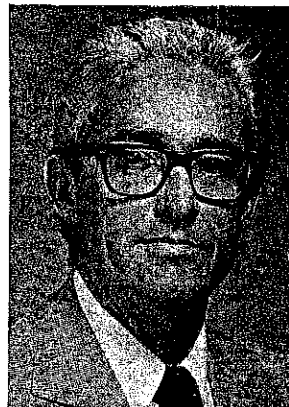
As the 1988 GCAGS Convention gets under way, it is our sincere hope and belief that the down times are behind us and there are bright times ahead. Let us look for "Opportunities...Where Next?"

## REPORT OF THE EDITOR GCAGS

Over a period of thirty-seven years the *Transactions* have become the pre-eminent reference for geologists of the Gulf region. The scope and diversity of articles in the *Transactions* have grown and changed with developments in the geological sciences, but they have retained their regional focus. The 1988 *Transactions* should continue the tradition.

I would like to acknowledge the able assistance of the members of the Editorial Committee. Their incisive and rigorous reviews contributed immeasurably to the quality of the papers. Additional reviewers were Roger Bottner, Martin Cassidy, Craig Faris, and Laura Folsie. Their aid and expertise are appreciated.

I am indebted to my Associate Editors, Mike Ledet and Sue Duffield. Sue graciously accepted the onerous task of assuming many responsibilities during a period of six weeks when I was out of the country. I am confident that any errors in the *Transactions* were the product of my time on the job.



**AL WEIDIE**



**J.O. SNOWDEN**

## REPORT OF THE TECHNICAL PROGRAM CHAIRMAN

The Program Chairman's job has been an enjoyable one, and I am looking forward to an interesting and exciting meeting. I would like to thank the authors for their cooperation and promptness in meeting the program deadlines and for the excellent quality of their work. Special thanks are due Program Committee members Mark Gallagher and Ray Stephens for their major role in putting the program together. GCS/SEPM Program Chairman Bill Ward and Poster Chairman Mike Hiner were very helpful in their efforts to coordinate the technical programs. I am grateful to the other committee chairmen for their help and support in coordinating the technical program with other convention activities.





# OFFICERS OF MEMBER SOCIETIES

## GULF COAST ASSOCIATION OF GEOLOGICAL SOCIETIES/ GULF COAST SECTION OF AAPG

### ALABAMA GEOLOGICAL SOCIETY, P.O. Box 6184, University, Alabama 35486

PRESIDENT ..... Dorothy E. Raymond  
VICE PRESIDENT ..... Mark S. Drummond  
SECRETARY ..... Janyth S. Tolson  
TREASURER ..... Lawrence J. Rheams

### AUSTIN GEOLOGICAL SOCIETY, P.O. Box 1302, Austin, Texas 78767

PRESIDENT ..... Bruce Fink  
PRESIDENT ELECT ..... Ed Garner  
VICE PRESIDENT ..... Peter Boone  
SECRETARY ..... Paul Lewis  
TREASURER ..... Diana Slagle

### BATON ROUGE GEOLOGICAL SOCIETY, INC., P.O. Box 19151, University Station, Baton Rouge, Louisiana 70893

PRESIDENT ..... Richard P. McCulloh  
VICE PRESIDENT ..... Leonard H. Guilbeau  
SECRETARY ..... Bill Walter  
TREASURER ..... Bradford C. Hanson

### CORPUS CHRISTI GEOLOGICAL SOCIETY, P.O. Box 1068, Corpus Christi, Texas 78403

PRESIDENT ..... Thomas B. Henderson, Jr.  
PRESIDENT ELECT ..... Patrick A. Nye  
VICE PRESIDENT ..... William A. Walker  
SECRETARY ..... Carroll A. Pyle  
TREASURER ..... Hollis Marshall

### EAST TEXAS GEOLOGICAL SOCIETY, P.O. Box 216, Tyler, Texas 75710

PRESIDENT ..... Russell W. Jackson  
VICE PRESIDENT ..... Phillip W. Shoemaker  
SECRETARY-TREASURER ..... C. F. Clawson

### HOUSTON GEOLOGICAL SOCIETY, 7171 Harwin, Suite 314, Houston, Texas 77036

PRESIDENT ..... Dietmar Schumacher  
PRESIDENT ELECT ..... Richard S. Bishop  
VICE PRESIDENT ..... W. L. Tidwell  
SECRETARY ..... Tamara Braun  
TREASURER ..... Cyrus Strong

### LAFAYETTE GEOLOGICAL SOCIETY, P.O. Box 51896, Lafayette, Louisiana 70505

PRESIDENT ..... Philip C. Judice  
FIRST VICE PRESIDENT ..... Gary P. Huffman  
SECOND VICE PRESIDENT ..... Michael Collins  
SECRETARY ..... Carlton Cook  
TREASURER ..... Samuel G. Porter

**MISSISSIPPI GEOLOGICAL SOCIETY, P.O. Box 422, Jackson, Mississippi 39205**

PRESIDENT ..... Stanley King  
FIRST VICE PRESIDENT ..... Stanley J. Galicki  
SECOND VICE PRESIDENT ..... E. James Files  
SECRETARY ..... L. Edward Hollingsworth  
TREASURER ..... Peter H. Lufholm

**NEW ORLEANS GEOLOGICAL SOCIETY, P.O. Box 52172, New Orleans, Louisiana 70152**

PRESIDENT ..... M. R. Douglass  
PRESIDENT ELECT ..... Carlo C. Christina  
VICE PRESIDENT ..... Paul Jurik  
SECRETARY ..... Michael J. Gallagher  
TREASURER ..... Samuel A. Miciotto

**SHREVEPORT GEOLOGICAL SOCIETY, P.O. Box 750, Shreveport, Louisiana 71162**

PRESIDENT ..... A. Michael Umphress  
FIRST VICE PRESIDENT ..... Alan L. Brittain  
SECOND VICE PRESIDENT ..... Austin A. Sartin  
SECRETARY ..... Gary D. Boland  
TREASURER ..... Jenny Y. Hope

**SOUTH TEXAS GEOLOGICAL SOCIETY, D-100 Petroleum Center, San Antonio, Texas 78209**

PRESIDENT ..... Kenneth O. Seewald  
VICE PRESIDENT ..... Thomas E. Ewing  
SECRETARY ..... Eugene L. Ames III  
TREASURER ..... Douglas A. Draves

**SOUTHEASTERN GEOLOGICAL SOCIETY, P.O. Box 1634, Tallahassee, Florida 32302**

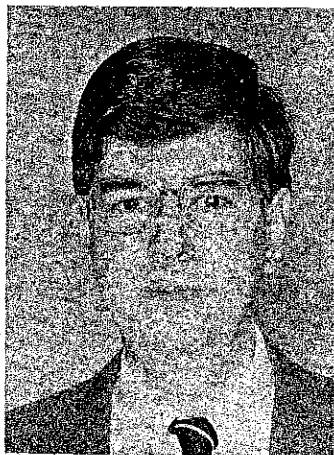
PRESIDENT ..... Richard A. Davis, Jr.  
VICE PRESIDENT ..... Fred Pirkle  
SECRETARY-TREASURER ..... Donnie McClautherty

**GULF COAST ASSOCIATION OF GEOLOGICAL SOCIETIES  
BEST PAPER AWARDS  
AND A. I. LEVORSEN MEMORIAL AWARD  
THIRTY-SEVENTH ANNUAL MEETING  
SAN ANTONIO, TEXAS  
1987**

**FIRST PLACE and A. I. LEVORSEN AWARDS** were presented to Shirley P. Dutton, Robert J. Finley and Karen L. Herrington for their paper entitled "Organic Geochemistry of the Lower Cretaceous Travis Peak Formation, East Texas Basin."



**SHIRLEY P. DUTTON** is a Research Scientist at the Bureau of Economic Geology, The University of Texas at Austin. A native of Schenectady, NY, she received a B.A. in Geology from the University of Rochester in 1975 and did graduate work at the University of Texas at Austin, receiving an M.A. in 1977 and a Ph.D. in 1986. The subject of her dissertation research was diagenesis and burial history of the Travis Peak Formation, East Texas. Dutton has been with the Bureau of Economic Geology since 1977, where her research projects have included diagenetic studies of Travis Peak sandstones and Pennsylvanian sandstones of North-Central Texas and the Texas Panhandle; subsurface stratigraphic and geochemical analysis of the Pennsylvanian section, Palo Duro Basin; study of the formation and diagenesis of salt dome caprock; and analysis of geologic and engineering properties of abandoned oil fields of the Gulf Coast and East Texas Basins. She participated in the 1986-87 AAPG Distinguished Lecture Tour, discussing diagenesis of Pennsylvanian granite wash in the Anadarko Basin.



**ROBERT J. FINLEY** is the Program Director for Gas Resources and currently the Acting Deputy Director for the Bureau of Economic Geology, The University of Texas at Austin. Finley has been with the Bureau since 1976 where he has conducted research on oil and gas resources and on remote sensing for mineral and hydrocarbon applications. He currently directs studies on tight gas sandstones, oil and gas reserve growth, coalbed methane, and the development of an atlas of major Texas gas reservoirs. He holds a Ph.D. in Geology from the University of South Carolina, specializing in sedimentology, and is currently Chairman of the AAPG Committee on Development Geology.



**KAREN L. HERRINGTON** is a Research Assistant at the Bureau of Economic Geology, The University of Texas at Austin. She attended the University of Texas at Austin, receiving a B.S. in Geology in 1982 and an M.A. in 1985. Her Master's thesis was a geochemical and petrographic study of low temperature fluid alteration in the Franciscan of California. She has been with the Bureau of Economic Geology since 1985 and has worked on the San Andres Formation of the Central Basin Platform and on the Travis Peak Formation in East Texas. She is currently studying the effects of reservoir bitumen and authigenic illite on core measurements and log response in tight gas sands.



**SECOND PLACE** was awarded to Robert Evans for his paper entitled "Pathways of Migration of Oil and Gas in the Mississippi Salt Basin."

**ROBERT EVANS** is a native of England. He was educated at Nottingham University (B.S., Geology, 1962), Dalhousie University, Nova Scotia (M.S., Geology, 1965), and the University of Kansas (Ph.D., Geology, 1972). His principle field of specialization is the geology of evaporites. He was employed by Mobil Research in 1969. In 1976, he joined Mobil Exploration and Production eventually to return to Mobil Research in 1981. He is co-author of *Marine Evaporites*, 1973. He is the author of numerous publications on evaporites. These publications describe sedimentation, diagenesis, deformation, chemistry, regional setting and relationship to plate separation. Evans' current research includes secondary migration of hydrocarbons, growth of salt domes and associated faulting and the four-dimensional interrelationship of geologic processes. Among his honors and awards are included the Literary Award, Dalhousie, Haworth Award and Thesis with Honors, University of Kansas and AAPG Distinguished Lecturer 1980-81.



**THIRD PLACE** was awarded to Cynthia England Black and Robert R. Berg for their paper entitled "Fan-Delta Reservoir in the Lower Cotton Valley Group (Jurassic), Kildare Field, Northeast Texas."

**CYNTHIA ENGLAND BLACK** received her undergraduate degree in geology in 1980 at Aberdeen University, Scotland where she graduated with first class honors. She received her M.S. degree in Geology at Texas A&M University in 1983. Her principle areas of interest as a student was in clastic sedimentology and stratigraphy. She was employed by Exxon, USA in Midland, Texas in 1982. Her work with Exxon has focused on stratigraphic traps, seismic stratigraphy and seismic applications to production problems.

**ROBERT R. BERG** is Professor of Geology and holds the Michel T. Halbouty Chair at Texas A&M University. His academic experience was preceded by industrial experience of 16 years with The California Company, Cosden Petroleum Corporation, and as a consulting geologist. In 1967, he became Professor and Head of Geology at Texas A&M, and from 1972 to 1983 was Director of the Office of University Research. His publications include a textbook entitled *Reservoir Sandstone* (1986, Prentice-Hall, Inc.) and papers on the depositional environments of sandstones and on the role of hydrostatic and hydrodynamic pressures in oil accumulation.

He received his B.A. and Ph.D. degrees in Geology from the University of Minnesota (1948, 1951), and he has served as president of the Rocky Mountain Association of Geologists (1966) and the American Institute of Professional Geologists (1971). He is a Fellow of the Geological Society of America, an Honorary Member and Certified Petroleum Geologist of the American Association of Petroleum Geologists, and an Honorary Member of the Gulf Coast Association of Geological Societies. He has been a distinguished Lecturer of the AAPG and has received the Association's A.I. Levorsen Memorial Award on four different occasions. In 1981 he was awarded the AIPG's Ben F. Parker Medal for "Outstanding Service to the Profession", and in 1988 he was elected to membership in the National Academy of Engineering.





# GULF COAST ASSOCIATION OF GEOLOGICAL SOCIETIES BEST PAPER AWARDS AND A. I. LEVORSEN MEMORIAL AWARDS

	First Award	Second Award	Third Award	Levorsen Award*
1959	J. E. Walters	R. L. Oakes	H. A. Bernard C. F. Major, Jr. B. S. Parrott	
1960	Not awarded			
1961	R. D. Ocamb	D. I. Andrews J. C. Stipe	R. P. Fietz K. R. Scott W. E. Hayes	
1962	D. R. Tucker	R. J. Granberry R. C. Wilshusen	G. C. Glaser (tie)# W. R. Walton (tie)	
1963	E. H. Rainwater	V. Peppard	S. L. Blanton, Jr.	
1964	E. H. Rainwater	D. R. Boyd B. F. Dyer	J. L. Arps	
1965	C. R. Kolb J. R. van Lopik	G. R. Kellough	Not awarded	
1966	B. J. Sloan, Jr	W. R. Paine	R. E. Gernant R. V. Kesling	B. J. Sloan, Jr.
1967	H. Yarborough, Jr	W. A. Price	J. Ewing (tie) J. C. Meyers (tie)	H. Yarborough, Jr.
1968	J. D. Myers	E. H. Rainwater	D. J. Hughes	J. D. Myers
1969	P. O. Roehl	J. K. Rogers	D. F. McNamee (tie) L. F. Brown (tie)	J. K. Rogers
1970	J. J. Amoruso	R. R. Berg	J. F. Harris	J. J. Amoruso
1971	H. Yarborough, Jr.	D. A. Reel (tie) G. M. Griffin B. J. Sloane (tie) J. A. Hartman (tie)	Not awarded	H. Yarborough, Jr.
1972	R. R. Berg	M. T. Halbouty	J. J. Amoruso	R. R. Berg
1973	R. D. Woods J. W. Addington	R. D. Ottman P. L. Keyes M. A. Ziegler	R. R. Berg R. L. Findley	J. M. Coleman L. D. Wright
1974	D. H. Kupfer	J. M. Coleman L. D. Wright J. N. Schyda T. Whelan	C. A. Parker	D. H. Kupfer
1975	W. L. Seal J. A. Gilreath	J. D. Myers	B. P. Baganz J. C. Horne J. C. Fern	J. D. Myers
1976	J. D. Robinson A. R. Troell	J. W. Becher C. H. Moore	N. Neel	J. D. Robinson A. R. Troell
1977	D. K. Davies W. R. Almon	J. O. Lewis	J. O. Snowden W. B. Simmons E. B. Troughber R. W. Stephens	D. K. Davies W. R. Almon

	First Award	Second Award	Third Award	Levorsen Award*
1978	C. T. Siemers	J. W. Lund J. S. King R. E. Berlitz J. A. Gilreath	E. F. McBride	C. T. Siemers
1979	C. D. Winker	R. R. Berg	C. C. Christina K. G. Martin	R. R. Berg
1980	E. A. Mancini D. J. Benson	F. W. Harrison, Jr.	G. N. Gatenby	E. A. Mancini D. J. Benson
1981	E. C. Roy, Jr. M. Eidelbach N. Trumbly	J. L. Coleman, Jr. C. J. Coleman	G. J. Grabowski, Jr.	E. C. Roy, Jr. M. Eidelbach N. Trumbly
1982	T. E. Ewing S. C. Caran	D. J. Benson E. A. Mancini	R. R. Berg M. F. Habeck	T. S. Ewing S. C. Caran
1983	J. W. Cagle M. A. Khan	W. M. Ahr H. B. Hull, Jr.	T. E. Ewing (tie) C. H. Moore (tie)	J. W. Cagle M. A. Khan
1984	G. Kinsland	S. K. Stewart	C. L. Sartor S. R. Howard	G. Kinsland
1985	C.C. Walters M. R. Cassa	E. A. Mancini R. M. Mink B. L. Bearden	A. L. Workman J. S. Hanor	W. E. Galloway
1986	Shirley P. Dutton	Arthur H. Saller Billy R. Moore	James M. Coleman David P. Prior Harry H. Roberts	Shirley P. Dutton
1987	Shirley P. Dutton Robert Finley Karen Herrington	Robert Evans	Cynthia Black Robert Berg	Shirley P. Dutton Robert Finley Karen Herrington

\*—This award is given by the AAPG to the paper that best exemplifies creative ideas in oil and gas exploration (first award, 1966).

#—Glaser and Walton received First Place in the Paleontology Division for their 1962 paper.

## HONORARY MEMBERSHIP GCAGS



WILFORD LEE STAPP

Wilford Stapp founded the *South Texas Geological Society Bulletin* in 1960, in answer to two needs: promoting the GCAGS convention set for San Antonio in 1961, and raising the professional sights of discouraged geologists. He succeeded on both counts, for the convention was a hit, and the *Bulletin* has for 28 years been an important reference for South Texas geology. And when the convention returned to San Antonio in 1967, he was GCAGS President.

Wilford was born in Brazil in 1918, to Baptist missionaries. At age 11, he worked for an American driller on the beach there, as translator and firewood fetcher.

He received the B.A. from Baylor University and the M.A. from the University of Texas - Austin, in Geology and Petroleum Engineering. Four years of military service interrupted his career. As an Air Force communications officer, he served combat duty over North Africa and Italy.

Wilford then spent 10 years with Sunray in San Antonio, Abilene, and Corpus Christi. In 1956, he opened a consulting partnership in New Orleans, returning to San Antonio in 1959 as Chief Geologist with Phillips Drilling Co. In 1964, he formed the Stapp Drilling Company, which he operated for six years. He then served as Vice President of Meridian Oil Co. of San Antonio.

Consulting since 1972, he has worked in Asia, Australia, the Persian Gulf, Morocco, Namibia, England, the Dominican Republic, Puerto Rico, France, Louisiana, and Texas.

Wilford served as Editor, Vice President, and President of GCAGS, and has held every office in STGS. After founding the *Bulletin*, he edited two of the three volumes of *Contributions to the Geology of South Texas* published by STGS. He was elected Honorary Lifetime Member in 1964.

As a member of AAPG since 1939, he has served as Associate Editor of the *AAPG Bulletin*, convention Program Chairman, and member of the House of Delegates. He is a Fellow of the Geological Society (London), and holds membership in the Society of Petroleum Engineers, Sigma Gamma Epsilon, and the Society of Independent Professional Earth Scientists.

Through his efforts as Founding President of the Classical Broadcasting Society of San Antonio, public radio station KPAC was born. He is a member, past officer, and board member of numerous performing arts and musical societies. He has been married to Margaret Clark Stapp for 40 years.

Wilford has never been interested in the status quo: "You've got to be true to what you believe in, first, and let everything else fall second." Wilford Lee Stapp has been true to his profession, to his community, to the science of Geology, and to the art of oil finding, and therefore this Honorary Membership in GCAGS is a reward richly deserved.

Leslie Jones

THE UNIVERSITY OF CHICAGO

PHYSICS DEPARTMENT

5300 S. DICKINSON DRIVE

CHICAGO, ILLINOIS 60637

TEL: 773-936-3700

FAX: 773-936-3700

WWW: WWW.PHYSICS.UCHICAGO.EDU

WWW: WWW.PHYSICS.UCHICAGO.EDU

WWW: WWW.PHYSICS.UCHICAGO.EDU

WWW: WWW.PHYSICS.UCHICAGO.EDU

WWW: WWW.PHYSICS.UCHICAGO.EDU

WWW: WWW.PHYSICS.UCHICAGO.EDU

WWW: WWW.PHYSICS.UCHICAGO.EDU

WWW: WWW.PHYSICS.UCHICAGO.EDU

WWW: WWW.PHYSICS.UCHICAGO.EDU

WWW: WWW.PHYSICS.UCHICAGO.EDU

WWW: WWW.PHYSICS.UCHICAGO.EDU

WWW: WWW.PHYSICS.UCHICAGO.EDU

WWW: WWW.PHYSICS.UCHICAGO.EDU

WWW: WWW.PHYSICS.UCHICAGO.EDU

WWW: WWW.PHYSICS.UCHICAGO.EDU

WWW: WWW.PHYSICS.UCHICAGO.EDU

WWW: WWW.PHYSICS.UCHICAGO.EDU

WWW: WWW.PHYSICS.UCHICAGO.EDU

WWW: WWW.PHYSICS.UCHICAGO.EDU

WWW: WWW.PHYSICS.UCHICAGO.EDU

WWW: WWW.PHYSICS.UCHICAGO.EDU

WWW: WWW.PHYSICS.UCHICAGO.EDU

WWW: WWW.PHYSICS.UCHICAGO.EDU

# THIRTY-EIGHTH ANNUAL MEETING GCAGS OFFICERS AND COMMITTEE ASSIGNMENTS

## OFFICERS 1988

**President -** James A. Hartman, Independent  
**Vice President -** William R. Payne, Sagex, Inc.,  
 Corpus Christi, Texas  
**Secretary -** Robert W. Sabaté, The San'Doil Co.  
**Treasurer -** Janet E. Bailey, Texaco, Inc.

## CONVENTION COMMITTEES

**General Chairman -** Claude C. Baker, Mobil E. & P.  
 U.S., Inc.  
**Vice Chairman  
 GCAGS -** Robert W. Sabaté, The San'Doil Co.  
**Vice Chairman  
 SEPM -** John B. Dunlap, Jr., Paleo-Data, Inc.  
**Advertising -** Joseph B. Studlick, Chairman, Shell  
 Offshore, Inc.  
**Alumni Functions -** Carl E. Grieshaber, Chairman, CNG  
 Producing Co.  
 Chris J. Krotzer  
**Arrangements -** Robert S. Kline, Chairman,  
 Independent  
 Bruce J. Bahlinger  
 David P. Broadbridge  
 Eric C. Broadbridge  
 Douglas J. Christina  
**Audio-Visual -** Ron Youngblood, Chairman,  
 Schlumberger Well Services  
**Contributions -** Carlo C. Christina, Chairman,  
 C & R Exploration, Inc.  
**Crisis -** Rudolf B. Siegert, Chairman,  
 Independent  
 Willis E. Conatser  
**Editor - GCAGS -** Al E. Weidie, Chairman, University  
 of New Orleans  
 Susan L. Duffield  
 Michael M. Ledet  
 Emmett R. Adams  
 Peter Andronaco  
 Jon F. Blickwede  
 William H. Busch  
 Kraig Derstler  
 Gordon F. Frey  
 Kenneth J. Huffman  
 Ralph L. Kugler  
 Edward B. Picou, Jr.  
 Bradford E. Prather  
 Laura Serpa  
 Ron Stoessell  
 Charles A. Stuart  
 Alan Thomson  
**Co-Editors - SEPM -** Barry Kohl, Co-Chairman,  
 Chevron, USA, Inc.  
 Richard H. Fillon, Co-Chairman,  
 Texaco, Inc.  
 Susan L. Duffield  
 Sara M. Fulton

Gary W. Jacobs  
 Barbara A. Jenkins  
 Terrence C. O'Hearn  
 Guy W. Smith  
 William P.S. Ventress  
**Employment  
 Assistance -** Charles J. Corona, Chairman,  
 Consultant  
**Entertainment -** James P. Evans III, Chairman,  
 Orleans Exploration  
 Kenneth L. Brown  
 Linda Christian  
 Diane D. Daigle  
 Charles P. Deri  
 Alvin E. DuVernay, III  
 E. C. Kilgore  
 Michael J. Mahnke  
 Clifford W. Thomas  
 Tim P. Whitacre  
 James M. Zotkiewicz  
**Exhibits -** Robert B. Branson, Chairman,  
 Chevron, USA, Inc.  
 Mark Eckerle  
 Michael J. Roberts  
 Gary A. Trinchard  
**Field Trips -** Emmett R. Adams, Chairman,  
 Independent  
 Clifton A. Couture  
 George Herman  
 Frederick C. Palumbo, Jr.  
 Richard J. Stancliffe  
**Housing -** Janet K. Hutley, Chairman,  
 Texaco, Inc.  
**Judging and Awards  
 GCAGS -** Robert J. Ingram, Chairman,  
 Chevron, USA, Inc. (Retired)  
 Mark Eckerle  
 Janice L. Gregory  
 Katrina D. Withers  
**Judging and Awards  
 SEPM -** Michael J. Nault, Chairman,  
 Tenneco Oil Co.  
**Poster -** Michael L. Hiner, Chairman,  
 Shell Offshore, Inc.  
 Bethanne Breisacher  
 Manuel Valle, Jr.  
**Printing -** Duncan Goldthwaite, Chairman,  
 Consultant  
 Kathleen S. Wiltenmuth  
**Program-GCAGS -** J.O. Snowden, Chairman,  
 University of New Orleans  
 Mark J. Gallagher  
 Raymond W. Stephens  
**Program-SEPM -** William C. Ward, Chairman,  
 University of New Orleans  
 William H. Busch  
 Ralph L. Kugler  
 Edward B. Picou, Jr.  
**Publicity -** John C. Langford, Chairman,  
 JCL Services  
 Michael J. Deliz



**Reception -** Oran R. Carter, Chairman,  
Atwater Consultants, Ltd.  
Richard E. Heffner  
Cynthia Wiersma

**Registration -** Gene B. Wiggins III, Chairman,  
Atwater Consultants, Ltd.  
Stephanie R. Bruno  
Rob Christensen  
Angel Curet  
Kenneth G. Hays  
Tracy L. Marmande  
Terry Sulli  
Patricia A. Tedrick  
Roy C. Walther

**Short Course -** Jon Blickwede, Chairman,  
Amoco Production Co.  
David P. Broadbridge  
Susan L. Duffield  
Mark J. Gallagher  
Janice L. Gregory  
Gary G. Umbehagen  
Katrina D. Withers

**Speakers Assistance -** John P. McDowell, Chairman,  
Tulane University  
Georgé Flowers  
Owen Mills

**Spouses Activities -** Mary Walther, Chairwoman  
Evelyn Adams  
Carol Andrews  
Beverly Christina  
Joan Collier  
Trudy Corona  
Alma Dunlap  
Susan Farris  
Beverly Kastler  
Mary Petrocco  
Peggy Rogers  
Judy Sabaté  
Joanne Severson  
Carol Solien  
Bettye Wiggins  
Pat Williamson

**Tobin Theatre -** William W. Craig, Chairman,  
University of New Orleans  
Michael N. Fein  
Mark J. Gallagher  
Lee H. Meltzer

**Transportation -** Douglas A. Holmes, Chairman,  
Shell Offshore, Inc.

# OPPORTUNITIES — WHERE NEXT?

## Panel Discussion

### SPEAKERS



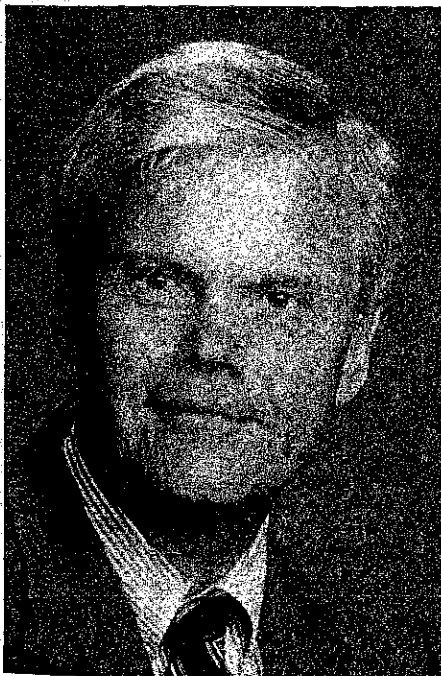
**PAUL H. DUDLEY, JR.**  
Consultant  
Portland, OR



**HENRY GOODRICH**  
President, Goodrich Oil Co.  
Shreveport, LA



**LEE H. MELTZER**  
Consultant  
New Orleans, LA  
Moderator



**WILLIAM F. WALLACE III**  
Vice President, Exploration  
Texaco, USA  
Houston, TX



**DR. WILLIAM L. FISHER**  
The University of Texas at Austin  
L.T. Barrow Chair, Mineral Resources  
Chairman, Dept. of Geological Sciences  
Director, Bureau of Economic Geology



# GULF COAST ASSOCIATION OF GEOLOGICAL SOCIETIES

## Honorary Members

J. J. Amoruso (1987)  
R. R. Berg (1985)  
D. R. Boyd (1982)  
J. Braunstein (1982)  
W. L. Fisher (1986)  
M. T. Halbouty (1982)  
F. W. Harrison, Jr. (1982)

H. N. Hickey (1982)  
R. J. LeBlanc, Sr. (1984)  
S. J. Lysinger (1983)  
J. O. Lewis (1983)  
L. H. Meltzer (1982)  
W. R. Paine (1984)

E. C. Roy, Jr. (1983)  
C. L. Sartor (1986)  
F. L. Smith, Jr. (1983)  
W. L. Stapp (1988)  
P. M. Strunk (1983)  
M. O. Turner (1984)

## Distinguished Service Awards

1982: R. E. Boyer  
1983: none awarded  
1984: A. T. Green, Jr.  
1985: C. E. Harrison  
1986: none awarded  
1987: none awarded  
1988: none awarded

P. B. Souders

B. C. Tucker

DeWitt C. Van Sicken  
R. W. Stephens, Jr.

# GULF COAST ASSOCIATION OF GEOLOGICAL SOCIETIES PAST OFFICERS AND CONVENTION CHAIRMEN

	HOST CITY	PRESIDENT	VICE-PRESIDENT	SECRETARY	TREASURER	CONVENTION CHAIRMAN
1951	New Orleans	L. Bowling	T. H. Philpott	J. S. Spencer	E. M. Baysinger	W. J. Nugent
1952	Corpus Christi	W. M. Chaddick, Jr.	W. A. Gorman	W. A. Peterson	T. D. Barber	R. D. Sprague
1953	Shreveport	R. T. Wade	D. D. Uterback	F. H. Webster	K. Carter	G. J. Joyce
1954	Houston	W. R. Canada	W. H. Knight	C. W. Holcomb	E. W. Kimball	T. H. Philpott
1955	Biloxi	A. E. Blanton	L. D. Traupe	R. A. Davis	C. C. Barber	R. C. Wilshusen
1956	San Antonio	R. L. Layden	M. W. Beckman	E. T. Musselman	A. F. Scott	O. G. Bell
1957	New Orleans	H. N. Hickey	P. Montgomery	J. F. Moss	W. H. Wallace, Jr.	A. E. Blanton
1958	Corpus Christi	E. A. Lohse	R. W. Grayson	W. W. Woolfolk	J. A. Wheeler	L. L. Palmer
1959	Houston	G. C. Hardin, Jr.	L. Harvey	A. W. Wood	E. G. Jeffreys	L. H. Meltzer
1960	Biloxi	M. F. Kirby	D. N. Osburn	H. O. Woodbury	E. L. Ames	H. J. Tyler
1961	San Antonio	D. Dassow	E. P. Roth	W. E. Bancroft	K. Soule	B. F. Dyer
1962	New Orleans	T. H. Philpott	J. C. Byrd	R. W. Luker	R. E. Rogers	E. A. Lohse
1963	Shreveport	J. C. Byrd	E. Knott	K. C. Harkins, Jr.	D. A. Pedrotti	R. R. Copeland
1964	Corpus Christi	K. Knott	R. E. Fairchild	W. A. Robbins, Jr.	J. L. George, Jr.	M. O. Turner
1965	Houston	R. E. Fairchild	A. M. Borland	M. L. Frazier, Sr.	L. C. Bryant	L. E. Warren
1966	Lafayette	A. M. Borland	J. H. Hensley	L. G. Hughes	E. D. Mimihaan	H. S. Puri
1967	San Antonio	W. L. Stapp	M. D. Horton	J. W. Yon, Jr.	C. W. Hendry, Jr.	J. O. Goffe
1968	Jackson	M. D. Horton	R. O. Vernon	C. E. Brown	B. C. Tucker	R. G. Williamson
1969	Miami	R. O. Vernon	H. J. Tyler	M. L. Dwight	P. G. Gray	J. M. Sides
1970	Shreveport	H. J. Tyler	L. H. Meltzer	M. H. Oakes	J. E. Melton	C. E. Harrison
1971	New Orleans	L. H. Meltzer	D. R. Boyd	M. E. Hole, Jr.	P. W. Cawthon, Jr.	F. W. Harrison, Jr.
1972	Corpus Christi	D. R. Boyd	F. M. Schall, Jr.	T. J. Eby, Jr.	J. L. Bellamy	C. H. Williams, Jr.
1973	Houston	F. M. Schall, Jr.	S. J. Lysinger	W. E. Taylor	H. L. Ladner	L. E. Jordan
1974	Lafayette	S. J. Lysinger	W. H. Moore	J. T. Palmer	C. E. Brown	E. G. Wermund, Jr.
1975	Jackson	W. H. Moore	C. L. Sartor	A. E. Bell	F. L. Osborne, Jr.	J. Braunstein
1976	Shreveport	C. L. Sartor	R. E. Boyer	R. M. Swords	C. J. Corona	G. His
1977	Austin	R. E. Boyer	P. G. Gray	S. L. Perkins	L. C. Bryant	M. A. Munchrath
1978	New Orleans	R. W. Stephens	E. C. Roy, Jr.	J. W. Shirley	R. A. Anderson	Wilson Humphrey
1979	San Antonio	E. C. Roy, Jr.	F. W. Harrison, Jr.	T. J. Wintermute	W. R. Payne	J. O. Lewis
1980	Lafayette	F. W. Harrison, Jr.	P. M. Strunk	C. G. Beckwith	C. A. Baird	J. C. Marble
1981	Corpus Christi	P. M. Strunk	J. J. Amoroso	S. A. Horton	P. D. Cate	J. M. Forgoison, Jr.
1982	Houston	J. J. Amoroso	S. C. Childress	C. S. Cook	E. W. Saye	L. E. Garner
1983	Jackson	S. C. Childress	J. P. Palmer	B. D. David	F. E. Lindfors-Kearns	H. L. Roland
1984	Shreveport	J. T. Palmer	E. G. Wermund	M. T. Tobin	T. Cooper	D. F. Tobin
1985	Austin	E. G. Wermund	D. E. Pope	R. W. Sabaté	J. E. Bailey	C. C. Baker
1986	Baton Rouge	D. E. Pope	R. H. Sams			
1987	San Antonio	R. H. Sams	J. A. Hartman			
1988	New Orleans	J. A. Hartman	W. R. Payne			

# ARTICLES OF INCORPORATION AND BYLAWS

In conjunction with the Association's 36th Annual Meeting in Baton Rouge, GCAGS became a Louisiana not-for-profit corporation. The Articles of Incorporation of GCAGS, Inc. are reproduced below in their entirety.

Further, in accordance with the provisions of the Association's Constitution and Bylaws, these Articles are in the process of being ratified by the GCAGS member societies. By the same procedure, the Constitution and Bylaws are being amended to become the corporation's Bylaws, also reproduced below; deletions are enclosed by parentheses and additions are underlined.

## ARTICLES OF INCORPORATION OF GULF COAST ASSOCIATION OF GEOLOGICAL SOCIETIES, INC.

### STATE OF LOUISIANA

### PARISH OF EAST BATON ROUGE

BEFORE ME, the undersigned authority, on the 15th day of October, 1986, personally came and appeared DAVID E. POPE and HARRY L. ROLAND, both of the full age of majority, whose names are hereunto subscribed, who both declared that, availing themselves of the laws of the State of Louisiana, and particularly Louisiana Revised Statutes of 1950, as amended, Title 12:201, et seq., relative to the formation of nonprofit corporations, they do hereby form a nonprofit corporation under and in accordance with the following Articles of Incorporation:

#### ARTICLE I — NAME

The name of this corporation is declared to be: GULF COAST ASSOCIATION OF GEOLOGICAL SOCIETIES, INC.

Harry L. Roland  
13569 Goodwood Boulevard  
Baton Rouge, Louisiana 70815

#### ARTICLE II — PURPOSES AND POWERS

This corporation is organized solely and exclusively for charitable, religious, educational and scientific purposes. In furtherance of such purposes, this corporation shall have all the powers granted to nonprofit corporations under the laws of the State of Louisiana. The generality of the foregoing is limited to the extent that the corporation shall have only such purposes and shall engage in only such activities as are permissible for tax-exempt corporations under Section 501(c) (3) of the Internal Revenue Code of 1954, as it may hereafter be amended. No part of the net earnings of the corporation shall inure to the benefit of any private member. No substantial part of the activities of the corporation shall be the carrying on of propaganda, or otherwise attempting to influence legislation, and the corporation shall not participate in or intervene in (including the publishing or distribution of statements) any political campaign on behalf of any candidate for public office.

#### ARTICLE III — DURATION

The duration of this corporation shall be in perpetuity or such maximum period as may be authorized by the laws of the State of Louisiana.

#### ARTICLE IV — NONPROFIT CORPORATION

This corporation is a nonprofit corporation as defined in Louisiana Revised Statutes of 1950, as amended, Title 12:201(7).

#### ARTICLE V — REGISTERED OFFICE

The local and post office address of its registered office is:  
Room 153, Geological Building  
Louisiana State University  
Baton Rouge, Louisiana

#### ARTICLE VI — REGISTERED AGENT

The full names and post office addresses of its registered agents are:

David E. Pope  
440 W. Roosevelt Street  
Baton Rouge, Louisiana 70802

#### ARTICLE VII — INCORPORATORS

The full names and addresses of the incorporators are:

David E. Pope  
440 W. Roosevelt Street  
Baton Rouge, Louisiana 70802

Harry L. Roland  
13569 Goodwood Boulevard  
Baton Rouge, Louisiana 70815

#### ARTICLE VIII — DIRECTORS & OFFICERS

A. The number, qualifications, terms of office, manner of election, compensation, and powers and duties of the directors; the time, place and manner of calling, giving notice of and conducting directors' meetings; and the number of directors which shall constitute a quorum, shall be prescribed by the Bylaws.

B. The officers of this Association shall be as prescribed by the Bylaws.

C. The initial Directors of the Association, who shall serve until their successors are elected and qualified, and their addresses are as follows:

David E. Pope  
Post Office Box 19151, LSU  
Baton Rouge, Louisiana 70893

Richard H. Sams  
D-100 Petroleum Center  
San Antonio, Texas 78209

E. G. Wermund, Jr.  
Post Office Box 1302  
Austin, Texas 78767

Thomas J. Carrington  
Alabama Geological Society  
Post Office Box 6184  
University, Alabama 35486

W. Douglas Hall  
Austin Geological Society  
Post Office Box 1302  
Austin, Texas 78767

Charles G. Groat  
Baton Rouge Geological Society  
Post Office Box 19151, LSU  
Baton Rouge, Louisiana 70893

John G. Drake  
Corpus Christi Geological Society  
Post Office Box 1068  
Corpus Christi, Texas 78403

James H. Denney, Jr.  
East Texas Geological Society  
Post Office Box 216  
Tyler, Texas 75710

C. R. Noll, Jr.  
Houston Geological Society  
6916 Ashcroft  
Houston, Texas 77081

Michael R. McWilliams  
Lafayette Geological Society  
Post Office Box 51896  
Lafayette, Louisiana 70505

J. R. White  
Mississippi Geological Society  
Post Office Box 422  
Jackson, Mississippi 39205

Richard A. Edmund  
New Orleans Geological Society  
Post Office Box 52172  
New Orleans, Louisiana 70152

Gary M. Hauson  
Shreveport Geological Society  
Post Office Box 750  
Shreveport, Louisiana 71162

John M. Long  
South Texas Geological Society  
D-100 Petroleum Center  
San Antonio, Texas 78209

Douglas S. Jones  
Southeastern Geological Society  
Post Office Box 1634  
Tallahassee, Florida 32302

## ARTICLE IX — BASIS OF ORGANIZATION

A. This Association shall be organized without capital stock and membership shall be evidenced by certificates of membership.

B. The qualifications of members, the different classes of membership and the designations, voting powers and other rights or privileges, restrictions or limitations granted to or imposed upon the members of each class shall be prescribed by the Bylaws.

C. Membership rights shall be renewable annually, shall not be transferable by assignment or sale or by inheritance or by testament upon the death of the owner, and no rights of membership belonging to the former owner shall inure to the assignee, vendee, heir or legatee.

D. The Board of Directors shall have the right and authority to reprimand, suspend or expel any member, personally or institutional, in accordance with procedure provided in the Bylaws.

## ARTICLE X — AMENDMENT

These Articles of Incorporation may be amended in any fashion permitted by the Louisiana nonprofit corporation law.

## ARTICLE XI — PERSONAL LIABILITY OF CORPORATION MEMBERS

No personal liability shall ever attach to any member of the corporation, his or her heirs or estate, merely by virtue of his or her being a member, director or officer of this Association. Any liability of the Association shall be a corporate liability, except where the member specifically assumes liability, or where such liability

may, under the law, be affected by the conduct or fraud of any given member in connection with duties assumed by such member.

## ARTICLE XII — INDEMNIFICATION OF MEMBERS OF BOARD OF DIRECTORS

The Association shall indemnify and hold harmless each director and officer now or hereafter serving the corporation from and against any and all claims and liabilities to which the director may be or become subject by reason of his or her now or the Association, and/or by reason of alleged acts or omissions as such director or officer, whether or not he or she continues to be such officer or director at the time when any such claim or liability is asserted, and shall reimburse each such director and officer for all legal and other expenses reasonably incurred in connection with defending any or all such claims or liabilities, including amounts paid or agreed to be paid in connection with reasonable settlements made before final adjudication with the approval of the Board of Directors, whether or not he or she continues to be such director or officer at the time such expenses are incurred; provided, however, that no director or officer shall be indemnified against any claim or liability arising out of his own negligence or willful misconduct or shall be indemnified against or reimbursed for any expense incurred in defending any or all such claims or liability or in settling the same unless, in the judgment of a majority of the Board of Directors of the corporation, it is determined that the director or officer against whom such claims or liabilities are asserted has not been guilty of negligence or willful misconduct. The foregoing right of indemnification shall not be exclusive of any other rights to which any director or officer may be entitled as a matter of law.

## ARTICLE XIII — DISSOLUTION

Upon the dissolution or winding up of the Association after paying or adequately providing for the debts and obligations thereof, any remaining assets shall be distributed, as the Board of Directors of the Association may then determine, to some other not-for-profit organization which is engaged in activities substantially similar to those of this Association, which is then qualified as an exempt organization under Section 501(c) (3) of the government, or to a state or local government, for a public purpose. None of the assets will be distributed to any member, officer or director of this corporation.

## ARTICLE XIV — CHARITABLE PURPOSES

For the purposes of these articles, "charitable purposes" include educational, religious, scientific, public and other purposes, contributions for which are deductible under Section 170(c) (1) or (2) of the Internal Revenue Code. Any reference in these Articles to a section of said Code shall be deemed to include any amendments thereto, as well as corresponding provision or provisions of any applicable future Internal Revenue Code.

THUS DONE AND SIGNED in my office in the City of Baton Rouge, Parish of East Baton Rouge, State of Louisiana, on the day, month and year hereinabove set forth, in the presence of the undersigned competent witnesses and me, Notary, after due reading of the whole.

## (CONSTITUTION AND BYLAWS) BYLAWS OF GULF COAST ASSOCIATION OF GEOLOGICAL SOCIETIES, INC.

### PART A — ORGANIZATION

#### ARTICLE I — NAME

This is a non-profit organization and shall be known as the "Gulf Coast Association of Geological Societies, Inc.". It is hereinafter referred to as "This Association."

#### ARTICLE II — OBJECT

The object of This Association is to provide for discussion and



publication of papers on subjects and problems coming within the scope of the Geological profession and with particular emphasis on Gulf Coast geology.

### ARTICLE III — ORGANIZATION

This Association is an organization of AAPG-affiliated Geological Societies in the Gulf Coast area.

#### Section 1.

The business of This Association shall be transacted by a Board of Directors composed of one representative from each member society and the President, Vice President, Secretary, Treasurer and Past President. The Vice President, Secretary, and Treasurer shall be elected by the Board of Directors at the annual meeting. At the request of the Vice President's society, however, the Secretary and Treasurer may be elected at a prior Board meeting but they will not take office until after the annual meeting. The Secretary and Treasurer shall be non-voting members of the Board of Directors. The Secretary and Treasurer shall be nominated by the Executive Committee of the local Geological Society next in line to host the annual meeting. The Vice President shall be nominated by the Executive Committee of the host society for the annual meeting two years hence and shall accede to the Presidency. Thus each year the President, Secretary, and Treasurer will be from the host society with the Vice President providing continuity with the Board of Directors as he assumes the Presidency in the ensuing year. The duties of these officers shall be those customary to their respective offices.

The GCAGS representative to the Advisory Council of American Association of Petroleum Geologists shall be selected by the Board of Directors of GCAGS and shall be an ex officio, non-voting member of the GCAGS Board of Directors.

Each member society shall designate a representative to the Board of Directors and in the event the chosen representative cannot attend any given Board of Directors meeting, an alternate representative shall be appointed by the member society to attend and vote in the absence of the representative. The representative, when practicable, shall be an officer or past officer of the society he represents.

Each society shall have one vote on actions taken by the Board of Directors with the exception that the host society, the next annual host society and the immediate past host society will be entitled to two votes by virtue of their members holding the offices of President, Vice President, and Past President.

The officers of the Board of Directors shall be elected for a term of one year. They shall be elected and assume their duties as soon after the annual meeting of This Association as is practicable, except as noted in Paragraph 1 with regard to the Secretary and Treasurer. Any vacancies shall be filled by the Board of Directors as provided above in Paragraph 1.

#### Section 2.

The business of This Association shall be conducted by the Board of Directors. A simple majority vote of the members present at meetings is required to effect decisions, except in those matters which require a greater majority, as set forth in (the Constitution and By-laws) these Bylaws.

A quorum shall consist of more than one-half of the voting members of the Board of Directors.

The Executive Committee composed of the President, Vice President, Secretary, Treasurer, Past President, and Finance

Committee Chairman shall have the authority to transact business of an emergency nature between meetings. Any business so transacted shall be subject to ratification by the Board of Directors at its next regularly scheduled meeting. A quorum of the Executive Committee shall be three members.

### ARTICLE IV — MEETINGS

There shall be an annual meeting of This Association, the time and place of which shall be determined by the Board of Directors. Additional meetings may be called at the discretion of the Board of Directors.

### ARTICLE V — PUBLICATIONS

There shall be an annual Transactions published by This Association, which shall contain papers presented at the annual meeting, and such other material as selected by the Board of Directors. The Board of Directors is authorized to have published additional bulletins, and other material which they feel will further the object of This Association.

### ARTICLE VI — FUNDS

The funds of This Association shall be deposited in any national bank or Federally insured Savings and Loan Association selected by the Finance Committee, to the credit of This Association, or invested in U.S. Government Bonds at the discretion of the Finance Committee.

### ARTICLE VII — AMENDMENTS

Amendments to this (Constitution) PART A and to the Articles of Incorporation may be proposed by the Board of Directors, or by any two member societies. Proposed amendments shall be submitted to each of the member societies in writing. It shall require an affirmative vote of three-fourths of the member societies to ratify such an amendment (to this Constitution).

### ARTICLE VIII — LATER AFFILIATION

Non-member Geological Societies in the Gulf Coast Area which are affiliated with AAPG may petition the Board of Directors for membership and shall be accepted by an affirmative vote of three-fourths of the Board of Directors.

#### (AMENDMENT 1)

### ARTICLE IX — RESIGNATION

Any member society may resign from This Association at any time by written notice to the Board of Directors. There shall be no obligation to transfer to such resigning society any portion of This Association's funds.

#### (AMENDMENT II)

### ARTICLE X — DISSOLUTION

This Association shall terminate at such time as a majority of the member societies shall so vote. Upon dissolution all funds and other property shall be divided (equally among the member societies) as mandated by the Articles of Incorporation.

(BY-LAWS)

**PART B: COMMITTEES, FINANCES**

**(I. COMMITTEES)**

**ARTICLE I — COMMITTEES**

The President, with the approval of the Board of Directors, shall appoint the Annual Meeting Chairman and the Publications Committee Chairman, appointments being for one year.

**Section 1: Annual Meeting Chairman**

The Annual Meeting Chairman shall direct the staging of the annual meeting, and shall have the authority to appoint such additional committees as he deems necessary.

**Section 2: Publications**

This committee shall be responsible for publishing all publications of This Association except the Transactions which falls under the purview of the Annual Meeting Chairman. Sales and storage of all GCAGS publications, including the Transactions, are the responsibility of this committee. The chairman shall provide annually to the Finance Committee an inventory of the GCAGS publications.

**Section 3:**

The President, with the approval of the Board of Directors, may appoint such additional committees as are necessary to conduct the the business of This Association.

**(II. TREASURER)**

**ARTICLE II — TREASURER**

The Treasurer shall have the authority to issue checks against the Annual Meeting bank account of This Association on his sole signature, but in the event of his absence or incapacity to act, withdrawals or payments by check may be made on the signature of the President during continuance of the absence, or incapacity, of the Treasurer. In this event, the identity and authority of the President, and the circumstances relating to the absence or incapacity of the Treasurer shall be certified by the Board of Directors, if so required by the depository. The Treasurer shall submit a financial report on the Annual Meeting at each meeting of the Board of Directors and shall keep a set of books in accordance with good accounting practices. He shall submit the books of the Annual Meeting to the Finance Committee by March 1st following the Annual Meeting. The office of Treasurer shall be bonded as directed by the Board of Directors.

**(III. FINANCE COMMITTEE)**

**ARTICLE III — FINANCE COMMITTEE**

The Finance Committee shall be responsible for investing and managing the funds of the Association. They shall be responsible for advancing to the Treasurer the necessary funds for operating the Annual Meeting and shall disburse funds for expenses and projects not related to the Annual Meeting as directed by the President upon approval by the Board of Directors. The Committee shall have authority to invest the funds as outlined in Article VI of PART A hereof. They shall prepare a financial report on the Association's funds and submit it at each meeting of the Board of Directors. They shall also keep an inventory of publications and equipment owned by the Association. They will keep a set of books in accordance with good accounting practices and will submit the books for auditing as requested by the Board of Directors. The Committee will oversee the preparation and submittal of the Association's Annual Income Tax Return. The Committee will also keep a file of these financial reports, as well as the report of the Treasurer for each Annual Meeting, for access by Officers and representatives of the annual meeting for future years. The Committee shall consist of (three) five members serving staggered three-year terms, such that each year one to three members will complete (his) their terms and (a) one to three new members will be appointed (in his place). The President of the Association, with the approval of the Board of Directors, shall appoint the members of the Finance Committee and select its chairman. Members of the Finance Committee shall be bonded as directed by the Board of Directors. All checks of greater than \$1,000 shall be signed by two of the Finance Committee members.

**(IV. THESE BY-LAWS)**

**ARTICLE IV — AMENDMENTS**

This PART B may be amended by an affirmative vote of three-fourths of the Board of Directors.

**(V.)**

**ARTICLE V — DUES**

There shall be no dues.

**GULF COAST SECTION  
SOCIETY OF ECONOMIC PALEONTOLOGISTS  
AND MINERALOGISTS  
1987-1988 EXECUTIVE COUNCIL**

PRESIDENT

Arthur S. Waterman  
Paleo-Data, Inc.  
6619 Fleur de Lis Drive  
New Orleans, LA 70124

PRESIDENT ELECT

Samuel P. Miano  
Amoco Production Company  
P.O. Box 50879  
New Orleans, LA 70150

VICE PRESIDENT

Brian J. O'Neill  
Shell Offshore, Inc.  
P.O. Box 61933  
New Orleans, LA 70161

SECRETARY

Ramil C. Wright  
Exxon Production Research Company  
P.O. Box 2189  
Houston, TX 77001

TREASURER

Charles G. (Jerry) Rosato  
Amoco Production Company  
P.O. Box 50879  
New Orleans, LA 70150

PAST PRESIDENT

Charles L. McNulty  
The University of Texas at Arlington  
UTA Box 19049  
Arlington, TX 76019

**1988 ANNUAL CONVENTION COMMITTEE**

VICE CHAIRMAN

John B. Dunlap, Jr  
Paleo-Data Inc.  
6619 Fleur de Lis Dr.  
New Orleans, LA 70124

PROGRAM CHAIRMAN

William C. Ward  
Department of Geology & Geophysics  
University of New Orleans  
New Orleans, LA 70148

CO-EDITOR

Barry Kohl  
Chevron USA, Inc.  
935 Gravier Street  
New Orleans, LA 70112

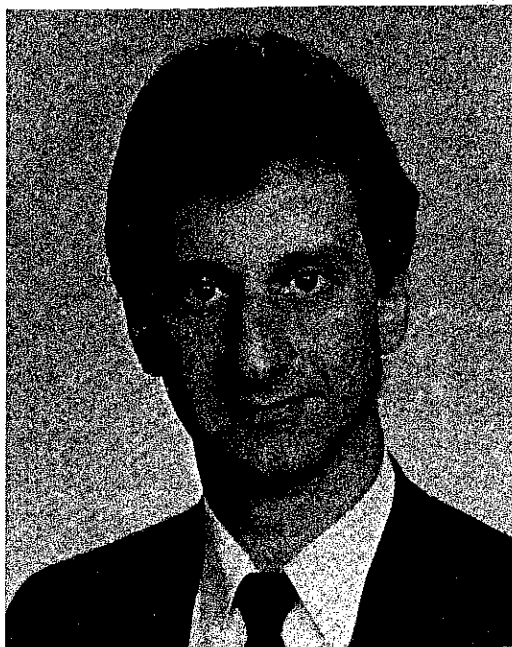
CO-EDITOR

Richard Fillon  
Texaco, Inc.  
P.O. Box 60252  
New Orleans, LA 70160

AWARDS AND JUDGING CHAIRMAN

Michael J. Nault  
Tenneco Oil Co.  
P.O. Box 39300  
Lafayette, LA 70503

**REPORT OF THE PRESIDENT  
GULF COAST SECTION  
SOCIETY OF ECONOMIC PALEONTOLOGISTS AND MINERALOGISTS  
1988**



**ARTHUR S. WATERMAN**

The Gulf Coast Section/SEPM is very fortunate this year to have five very able and dedicated members serve as committee chairmen for this Annual Meeting. My thanks go to John B. Dunlap, Jr. Vice Chairman, who served as chief liaison with GCAGS and coordinator for Section input, and to William C. Ward, whose efforts as Program Chairman yielded three sessions of diverse and interesting technical presentations. Barry Kohl and Richard Fillon, GCS/SEPM Co-Editors of the *Transactions*, deserve special thanks for their work in maintaining high editorial standards. Michael J. Nault, Awards and Judging Chairman, continued his long standing, and greatly appreciated, service to the Section in this capacity.

The Annual Field Trip is being held in conjunction with this meeting. Led by Ernest A. Mancini and Berry Tew, this two and a half day trip will visit type localities and outstanding collecting exposures from the Paleogene of Mississippi and Alabama.

The Eighth Annual Research Conference was held December 6-9 in Houston, Texas. The topic, "Innovative Biostratigraphic Approaches to Sequence Analysis: New Exploration Opportunities" was well received by the 220 participants. Attendees to the conference hailed from 15 states and seven countries which underscores the widespread reputation for excellence these conferences enjoy. The Program Committee, chaired by Sheila Barnette and Denise Butler prepared outstanding sessions.

This year we are pleased to convene the Ninth Annual Research Conference, December 4-7 in New Orleans, Louisiana. The topic will be "Geochemistry of Gulf Coast Oils and Gasses: Their Characteristics, Origin, Distribution, and Exploration and Production Significance." Program Chairman Dietmar Schumacher and Mahlon C. Kennicut are planning a full program of presentations and posters on fundamental topics such as hydrocarbon sourcing, migration, quality, alteration, and composition.

These Research Conferences are made possible through the financial auspices of the GCS/SEPM Foundation and the guidance of its Executive Director Bob F. Perkins and Trustees Don Bebout (Chairman), Clarence C. Albers, and William P. S. Ventress. New publications of the Foundation include the proceedings of the Eighth Annual Research Conference, "Innovative Biostratigraphic Approaches to Sequence Analysis: New Exploration Opportunities," and proceedings of the Seventh Annual Research Conference, "Shelf Sedimentation, Shelf Sequences and Related Hydrocarbon Accumulation" (in press). The Foundation seeks tax-exempt contributions to support its endeavors. This year, while the level of individual contributions has been maintained, corporate donations have dropped considerably.

I am fortunate to have had such able and dedicated colleagues serve with me this past year on the Executive Council: Sam Miano (President Elect), Brian O'Neill (Vice President), Ray Wright (Secretary), Jerry Rosato (Treasurer), and Charlie McNulty (Past President). I thank all those listed above as well as the area business representatives for their time and their efforts. And to the membership of GCS/SEPM, thank you for allowing me the privilege of service to the Section.

Arthur S. Waterman  
President, GCS/SEPM

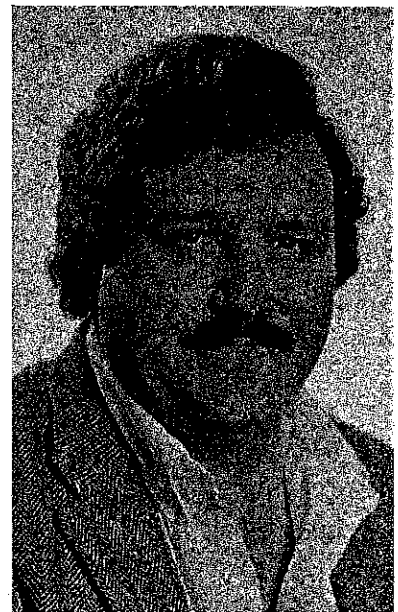
**GULF COAST SECTION  
SOCIETY OF ECONOMIC PALEONTOLOGISTS AND MINERALOGISTS  
BEST PAPER AWARD, THIRTY-FOURTH ANNUAL MEETING  
SAN ANTONIO, TEXAS  
1987**



**WAYNE C. ISPHORDING**



**DEWAYNE IMSAND**



**GEORGE C. FLOWERS**

**THE GSC/SEPM BEST PUBLISHED PAPER AWARD** was presented to Wayne C. Isphording, Dewayne Imsand and George C. Flowers, co-authors of "Storm-related Rejuvenation of a Northern Gulf of Mexico Estuary."

**WAYNE C. ISPHORDING** earned his B.S. and M.S. degrees at the University of Florida where he majored in Geology and minored in Physics. He received his Ph.D. at Rutgers University, in 1966, and presently holds the rank of Professor of Geology at the University of South Alabama. Isphording has carried out numerous studies dealing with the sedimentology and geochemistry of various bays and estuaries in the north Gulf of Mexico and has published and presented over 150 papers on a variety of geological topics. He was twice elected his university's "Outstanding Scholar" and was also named Distinguished Professor in the College of Arts and Sciences. He has had considerable experience in utilizing computer-graphics techniques in environmental litigation and has worked extensively as a consultant in the field of Engineering Geology. He is a member of AAPG, SEPM, AEG, and AIPG and is also a fellow in the GSA. He is a past winner, on two other occasions, of GCAGS-GCS/SEPM "Best Paper" Awards.

**F. DEWAYNE IMSAND** is an environmental engineer employed with the U.S. Army Corps of Engineers, Planning Division, in Mobile, Alabama. He has a B.S. in Engineering and has been with the Corps for 30 years. Imsand has conducted and managed many fluvial sediment investigations of the rivers and estuaries within the region. Since the mid 1970s, his major interest has been directed toward the evaluation of the environmental impact associated with proposed construction and operation of federal navigation projects.

**GEORGE C. FLOWERS** is a professor in the Department of Geology at Tulane University. He attended the University of South Alabama in Mobile from 1971 to 1975 and graduated cum laude with a B.S. degree in Geology. After completion of his B.S. degree, he was admitted to the Graduate Program in Geology at the University of California, Berkeley where he completed the Ph.D. degree in 1979, specializing in theoretical geochemistry. His Ph.D. dissertation completed under the direction of H. C. Helgeson was entitled *Equilibrium and Mass Transfer During the Progressive Metamorphism of Siliceous Dolomites*. After completion of the Ph.D. degree, he was a postdoctoral fellow in the Department of Chemistry and Lawrence Berkeley Laboratory at the University of California, Berkeley. From 1981 to the present he has been a professor at Tulane University and his interests include both theoretical and applied topics in geochemistry.

**GULF COAST SECTION SEPM  
EXCELLENCE OF PRESENTATION AWARD  
1987**



**ROWDY LEMOINE**



**EARLE McBRIDE**

**THE GCS/SEPM EXCELLENCE OF PRESENTATION AWARD** was a tie presented to Rowdy Lemoine for "Occurrence of a *Pseudophragmina (Proporocyclina) zaragosensis* Bank in the Upper Wilcox (Lower Eocene), Pointe Coupee Parish, Louisiana" and to Earle McBride for "Compaction of Norphlet Sandstones, Rankin County, Mississippi."

**ROWDY C. LEMOINE** is a research geologist with the Basin Research Institute and Louisiana Geological Survey at Louisiana State University in Baton Rouge. A native of Marksville, La., he received a B.S. degree in Geology from the University of Southwestern Louisiana and is presently completing his graduate studies at LSU. Rowdy has been employed by the Basin Research Institute since its inception in 1984 and has published several papers on the Wilcox and Sparta in south-central Louisiana. His research includes conventional core, seismic and electric log interpretation. He is primarily interested in reservoir development studies and the production potential of various sedimentary facies in the Gulf Coast. Lemoine is a member of the American Association of Petroleum Geologists and the Baton Rouge Geological Society.

**EARLE F. McBRIDE** received his B.A. degree from Augustana College (Rock Island, Illinois), his M.A. degree from the University of Missouri at Columbia, and his Ph.D. degree from the Johns Hopkins University. He worked two summers for Shell Oil Company (Tyler, Corpus Christi). McBride joined the Department of Geological Sciences at the University of Texas at Austin in 1959, where he spent his academic career and now is the Wilton E. Scott Centennial Professor in Geology. While at UT-Austin, he has guided 43 students through graduate degrees and served as the chairman of the Department of Geological Sciences from 1980-1985.

Contributions to geological society activities include leading numerous field trips to the Marathon Basin and serving as an officer in the SEPM, including the position of President in 1980-81. He was elected an Honorary Life Member of the Permian Basin Section, SEPM in 1978 and an Honorary Member of the national SEPM in 1986.

McBride's research contributions chiefly concern sandstone petrology and diagenesis, but he has made contributions on the origin of bedded cherts, abrasion and rounding of stream sands, experimental origin of laminations, and the sedimentary history of Paleozoic rocks of the Marathon Basin, Texas, and of Cretaceous clastic rocks of the Parras Basin, Mexico.

# BEST PAPER AWARDS

## GCS/SEPM

	Best Published Paper	Excellence of Presentation
1987	Wayne Isphording Dewayne Imsand George Flowers	Rowdy Lemoine Earle McBride
1986	Douglas F. Williams Dwight M. Trainor	Robert R. Berg
1985	Paul A. Thayer Harry H. Roberts	Gordon W. Fielder
1984	M. J. Ulrich J. R. Kyle P. E. Price	M. Kontrovitz
1983	E. C. Kusters A. Bailey	D. B. Prior
1982	J. Mazzullo	C. D. Winker
1981†	T. A. Daws A. V. Applegate J. C. Palacas	C. R. Handford

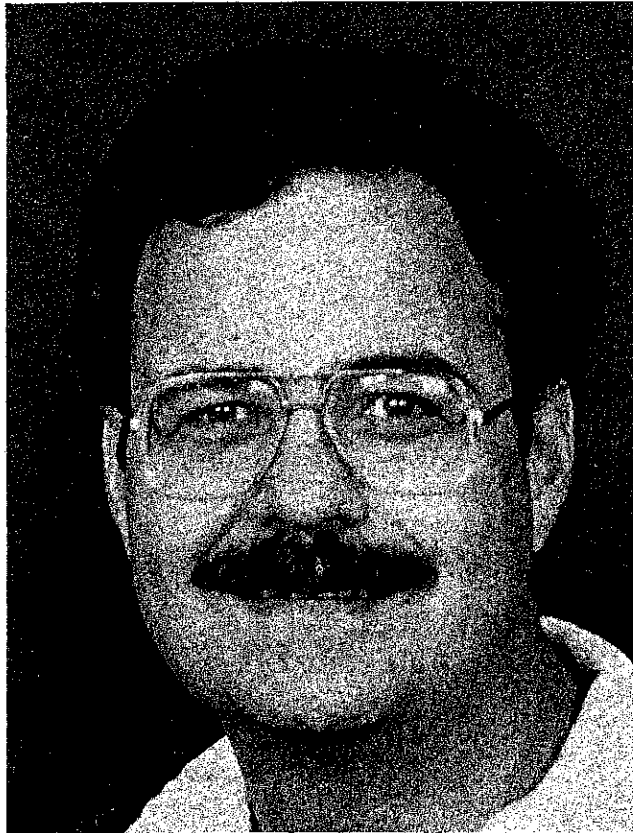
	First Place	Second Place	Third Place
1980††	A. W. Cleaves	I. L. van Heerden H. H. Roberts	T. A. Hansen
1979	L. C. Price J. L. Clayton L. L. Rummen	C. W. Poag R. C. Tresslar	R. E. Casey L. W. Gust R. A. Reynolds D. H. Williams A. Leavesley T. Duis J. M. Spaw
1978	A. Thomson	C. W. Poag	J. A. Schiebout
1977	C. D. Winker J. D. Howard	W. C. Isphording	R. M. Looney V. R. Baker
1976	C. J. Stuart C. A. Caughney	R. R. Berg R. R. Powell	C. W. Poag P. C. Valentine
1975	J. L. Wilson	K. F. Wantland M. E. York	W. C. Isphording
1974	G. M. Friedman	W. F. Tanner C. R. Berquist	R. J. Moiola D. Weiser A. B. Spencer
1973	W. F. Tanner	R. J. Moiola A. B. Spencer	P. A. Thayer (tie) W. J. Cleary E. O'Donnell (tie) A. P. Wright
1972	W. F. Tanner	A. E. Weidie J. L. Wolleben E. F. McBride	P. A. Thayer D. A. Textoris
1971	R. W. Maxwell, Jr.	C. W. Poag	E. A. Shinn
1970	W. W. Hay S. W. Wise, Jr. R. D. Stieglitz	J. B. Dunlap, Jr.	W. L. Fisher C. V. Proctor, Jr. W. E. Galloway J. S. Nagle

† - and Best Poster Award to E. A. Mancini

†† Before 1981, awards were given for first, second and third place.



# GSC/SEPM DISTINGUISHED SERVICE AWARD 1988



**MICHAEL J. NAULT**

Michael J. Nault, Senior Exploration Geologist (Paleontologist) with Tenneco Oil Exploration and Production Company is the recipient of the Gulf Coast Section of the Society of Economic Paleontologists and Mineralogists' Distinguished Service Award.

Mike was born and raised here in New Orleans, graduating from Brother Martin High School in 1972. He did his undergraduate and graduate work at Northeast Louisiana University in Monroe and the University of Southwestern Louisiana in Lafayette, respectively.

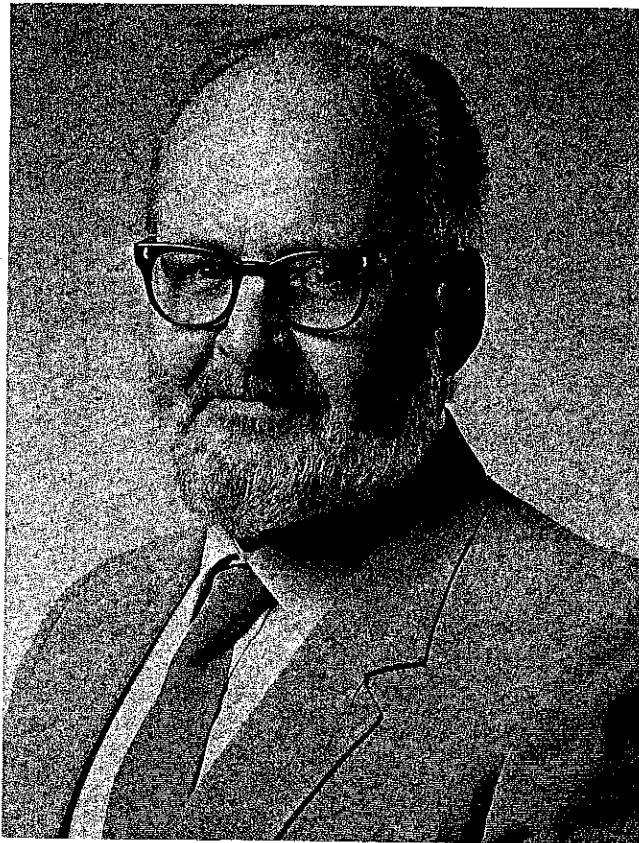
Mike started his professional career as a Research Geologist with the Louisiana Geological Survey in Baton Rouge. In 1980 he joined Arco Oil and Gas in Lafayette as a micropaleontologist. Since late 1981, he has been with the Western Gulf Division of Tenneco Oil in Lafayette, Louisiana.

It was while in Baton Rouge that he first became active with the GCS/SEPM, serving as associate editor of the GCAGS *Transactions* for the Lafayette Convention in 1980. Since then he has served as convention Judging and Awards Chairman seven times including this year in New Orleans. Mike has also served the section as Lafayette Business Representative in 1982-83, Vice President in 1983-84 and he was a member of the organizing committee of the 5th Annual GCS/SEPM Foundation Research Conference on Deep Water Sedimentation. He has agreed to serve as Vice Chairman of the GCAGS Convention in Lafayette in 1990 and is currently a candidate for President Elect of the GCS/SEPM. Mike is also an active member of AAPG, SEPM, and NAMS as well as being a charter member of the Baton Rouge Geological Society.

This award is in recognition of his dedication and service to the Gulf Coast Section of SEPM.

Stephen Truax, III

# GCS/SEPM DISTINGUISHED SERVICE AWARD 1988



**RICHARD PAUL ZINGULA**

A native Iowan, Dick Zingula received his Bachelor of Science degree from Iowa State University, and, from there, went on to Louisiana State University to acquire advanced degrees. Under the tutelage of H.V. Howe, Dick received an understanding of Gulf Coast geology and M.S. and Ph.D. degrees. Accepting a position with Humble Oil & Refining Co. (now Exxon), Dick started his career at the Houston Geologic Research Center as a micropaleontologist in 1953. From then until his retirement from Exxon Company, U.S.A. in 1986, Dick served the company not only in the capacity of a micropaleontologist, but also later as a stratigrapher and an environmentalist.

Early in his company career Dick was sent to an affiliate in Cuba to receive specialized training. While there, this fledgling paleontologist, raised far from the sea, was introduced to scuba diving. He immediately fell in love with the sport and, over the years, became not only an expert underwater diver, but also became recognized as an expert on marine life and underwater photography.

From early 1975 until about 1983, Exxon called upon Dick to spend part of his time studying the effects of offshore drilling on the marine environment, monitoring studies, and testifying on behalf of Exxon and industry. His studies and photographs of the biota surrounding production platforms have greatly aided our energy situation by educating the public, and state and federal officials on offshore structures as natural reefs, and by counteracting "bad thought" effects of drilling mud discharges. He has also aided in the "Rigs to Reef" concept on the removal of offshore platforms. Dick has led several offshore diving trips to expose legislators, regulators, and others to the marine environment near offshore structures; this included dives with Senator L.D. Weicker and Jacques Costeau. Some of his underwater photographs have been used in support of offshore structures by several federal officials, and were once presented to President Reagan. Two of his pictures adorn walls in the Interior Department, one in the office of former Secretary of Interior Clark, and another in a corridor display.

In the later 1970's and early 1980's, Exxon called upon Dick to use his talents in providing information, consultation, and exhibit material for Exxon's energy exhibit in the Communicore Building at Epcot Center.

As if his varied and busy career with Exxon and his sports diving were not enough, Dick has been, and still is, very active in the GCS/SEPM. Over the years he has served as Vice President, Type Locality Committee Chairman, and business representative. Dick has also served as a Houston Geological Society AAPG delegate and Field Trip Committee member. He has had numerous papers published, and has organized and run many field trips in the Gulf Coast area.

The foregoing society activities would have kept others busy enough, but not Dick. Members of the Houston Gem and Mineral Society and the Houston Museum of Natural Science, as well as Houston area schools have been the recipients of numerous lectures and classes on geology and paleontology from Dick Zingula. Dick is indeed a credit to the GCS/SEPM and the geological profession; it is therefore befitting that Richard Zingula should be one of the first to receive this GCS/SEPM Distinguished Service award.

Gerald R. Stude

# GULF COAST SECTION — SEPM

## HONORARY MEMBERS

Ester Applin (1964)  
 Alva C. Ellisor (1964)  
 Marcus A. Hanna (1964)  
 Henry V. Howe (1964)  
 Hedwig T. Kniker (1964)  
 Winnie McGamery (1964)  
 John R. Sandidge (1964)  
 J. B. Garrett, Jr. (1965)  
 E. H. Rainwater (1966)  
 Henryk Bronislaw Stenzel (1971)  
 Jules Braunstein (1973)  
 Grover E. Murray (1973)  
 Harold V. Anderson (1975)

Lyman D. Toulmin (1975)  
 Doris M. Curtis (1977)  
 Stuart A. Levinson (1978)  
 Fred L. Smith, Jr. (1978)  
 Charles W. Stuckey (1978)  
 William R. Paine (1980)  
 Frank E. Lozo, Jr. (1981)  
 Gene B. Martin (1984)  
 Bob F. Perkins (1984)  
 Edward B. Picou, Jr. (1984)  
 Claude M. Quigley, Jr. (1986)  
 William P. S. Ventress (1986)  
 Donald G. Bebout (1987)  
 David E. Pope (1987)

# GULF COAST SECTION — SEPM

## PAST OFFICERS

	PRESIDENT	VICE-PRESIDENT	SECRETARY	TREASURER
1953-1954	Stuart A. Levinson	Grover E. Murray	William H. Akers	Frank V. Stevensen
1954-1955	Charles W. Stuckey, Jr.	E.H. Rainwater	William H. Akers	Fred L. Smith, Jr.
1955-1956	E.H. Rainwater	Frank S. Westmoreland	Hugh A. Bernard	Eleanor T. Caldwell
1956-1957	Lloyd M. Pyeatt	J.O. Colle	H. Dillingham, Jr.	Eleanor T. Caldwell
1957-1958	J.O. Colle	Fred L. Smith, Jr.	Harold V. Andersen	William G. Parker
1958-1959	Marcus A. Hanna	Claude M. Quigley	Fred E. Smith	Bernard L. Hill, Jr.
1959-1960	David E. Pope	A.D. Ellis, Jr.	Gordon C. Munsey	H.A. Chun
1960-1961	Claude M. Quigley	Harold V. Andersen	E. Ann Butler	Edward Marks
1961-1962	Harold V. Andersen	Theodore D. Cook	Benjamin J. Petrusek	Albert D. Warren
1962-1963	Albert D. Warren	Ernest H. Horton	Blair S. Parrott	Henry H. Phillips
1963-1964	Lyman D. Toulmin	E. Ann Butler	Charles C. Albers	John E. Kilgore
1964-1965	Howard L. Tipword	Benjamin J. Petrusek	D. Jeter Smith	Emmett R. Adams
1965-1966	John B. Dunlap, Jr.	John J.W. Rogers	M. Ray Bane	Charles B. Morris
1966-1967	Hubert C. Skinner	Richard P. Zingula	Gene Ross Kellough	Gene B. Martin
1967-1968	Benjamin J. Petrusek	Dan McGregor	Garrett Briggs	Herbert A. Elliott, Jr.
1968-1969	William A. Atlee	Edgar B. O'Quinn	James W. Fowler	William E. Steinkraus
1969-1970	Fred L. Smith, Jr.	Kenneth L. Loep	Robert K. Sylvester	C. Wylie Poag, Jr.
1970-1971	Jules Braunstein	Douglas E. Jones	Walter H. Trenchard	Robert N. Davids
1971-1972	William W. Hay	William E. Steinkraus	Karl J. Koenig	Gerald R. Stude
1972-1973	C. Wylie Poag, Jr.	Emmett R. Adams	Gerald R. Stude	Joan B. Strough
1973-1974	Edward B. Picou, Jr.	Walter H. Trenchard	Lawrence C. Menconi	J. Loyd Tuttle, Jr.
1974-1975	Emmett R. Adams	Clifton A. Couture	Herbert A. Elliott, Jr.	Doris M. Curtis
1975-1976	James L. Lamb	Lawrence C. Menconi	William S. Grubb	John L. Carney
1976-1977	Clifton A. Couture	Eleanor T. Caldwell	Sherwood W. Wise, Jr.	Joseph E. Boudreaux
1977-1978	Gerald R. Strude	William P.S. Ventress	Gary R. Roberson	George C. Esker, III
1978-1979	Willard P. Leutze	Bob F. Perkins	Walter P. Kessinger	Kenneth A. Hodgkinson
1979-1980	Gene B. Martin	John L. Carney	Mary Ann Raffle	Arthur S. Waterman
1980-1981	Bob F. Perkins	Don G. Bebout	Sheila C. Barnette	Ted Karmen
1981-1982	William P.S. Ventress	Kenneth A. Hodgkinson	Brian J. O'Neill	Kurt Geitzenauer
1982-1983	John L. Carney	Ernest A. Mancini	Susan J. Conger Morris	Kevin C. Kilmartin
1983-1984	Don G. Bebout	Michael J. Nault	Susan J. Conger Morris	Nelson B. Yoder
1984-1985	Ernest A. Mancini	J.M. Crosbie	John G. McPherson	John B. Anderson
1985-1986	Susan J. Conger Morris	Arthur S. Waterman	John G. McPherson	Richard E. Constans
1986-1987	Charles L. McNulty	Denise M. Butler	Kurt R. Geitzenauer	Sylvester Q. Breard, Jr.
1987-1988	Arthur S. Waterman	Brian J. O'Neill	Ramil C. Wright	Charles G. Rosato

# BYLAWS

## GCS/SEPM

### ARTICLE 1. — OBJECT

1.01 The object of the Gulf Coast Section of the Society of Economic Paleontologists and Mineralogists is to promote the science of stratigraphy in the Gulf Coast states through research in paleontology and sedimentary petrology, especially as it relates to petroleum geology. The Corporation, herein referred to as the "Section," will be closely associated with the Gulf Coast Association of Geological Societies and will cooperate with it and with the local geological societies of which it is composed for the furtherance of mutual objectives.

### ARTICLE 2. — MEMBERS

2.01 The Section shall have members, associate members, charter members, and honorary members.

2.02 Members shall be persons engaged in paleontologic, petrographic or stratigraphic studies that have application to the geology of petroleum, who are members or associate members of the Society of Economic Paleontologists and Mineralogists and who work or reside in the Gulf Coast province of the states of Texas, Louisiana, Mississippi, Alabama, Georgia or Florida, or whose interest or work is principally within these states. Membership, once obtained, shall not be dependent upon continued residence in the aforementioned states.

2.03 Associate members shall be persons engaged in paleontologic, petrographic or stratigraphic studies that have application to the geology of petroleum, who work or reside in the Gulf Coast province of the above mentioned states, and who are not members or associate members of the Society of Economic Paleontologists and Mineralogists. Associates shall enjoy all the privileges of membership, save that they shall not hold office. Election to membership in the Society of Economic Paleontologists and Mineralogists will automatically advance associates to members.

2.04 Charter members are those whose application for membership were received before the first nomination of officers. They shall enjoy all the privileges of members and, hereinafter, are included in all references to "members."

2.05 The Council may elect as honorary members persons who have contributed distinguished service to the science of stratigraphy, paleontology or sedimentary petrology, especially as they relate to petroleum geology in the Gulf Coast. Honorary members shall not be required to pay dues.

2.06 Each candidate for membership shall submit to the Secretary an application on a form authorized by the Council for this purpose.

2.07 New members and associates enrolled after September 15 shall be considered as having paid their dues for the next calendar year.

### ARTICLE 3. — COUNCIL AND OFFICERS

3.01 Executive authority of the Section is vested in a board of directors known as the "Council" consisting of six members who are duly elected by the members, as follows: President, President-Elect, Vice President, Secretary, Treasurer, and the most recently retired Past President.

3.02 The President shall discharge the usual duties of a president, as well as act as presiding officer at all meetings of the Section and Council. He shall appoint an Editor, Program Chairman, Committee Chairman and Business Representatives.

3.03 The Vice President shall assume the duties of the Presi-

dent in the case of the absence or disability of the latter. He shall also be Chairman of the Membership Committee and Chairman of the Employment Counseling Committee.

3.04 The Secretary shall keep records of the proceedings of the Section and a complete list of the membership. He shall attend to the preparation and mailing of notices, membership application blanks and other materials necessary to the business of the Section.

3.05 The Treasurer shall have custody of all funds of the Section. He shall keep account of the receipts and disbursements, and submit his account to the membership at the end of each year.

3.06 The Council shall consider all candidates for membership and pass on the qualifications of the applicants; shall have control and management of the affairs and funds of the Section; shall designate the time and place of the Annual Meeting.

3.07 The President and Vice President shall not serve for more than one (1) year, except that if the Vice President succeeds to the position of Acting President, he may be elected to a full term as President.

3.08 In the event that neither the President nor Vice President is available to serve as presiding officer of the Section, the immediate Past President shall assume the President's duties.

3.09 The President-Elect shall serve for one (1) year as such, and in the following year he shall assume the office of President. He shall have no administrative authority except as a member of the Council. He shall acquaint himself with all the details of the office of President and generally prepare himself to serve as President. He shall be responsible for the preparation of the annual meeting for the ensuing year.

3.10 A vacancy occurring in the offices of Vice President, Secretary or Treasurer shall be filled by Council appointment.

3.11 A vacancy occurring in the office of President-Elect shall be filled by mail ballot by the membership through a special election called by the Council.

### ARTICLE 4. — MEETINGS OF MEMBERS

4.01 The Section shall hold at least one stated meeting each year, which shall be known as the Annual Meeting. This meeting will usually be held in conjunction with the Annual Meeting of the Gulf Coast Association of Geological Societies.

4.02 The program for the Annual Meeting shall be arranged by the Program Chairman in conjunction with the Chairman designated by the Gulf Coast Association of Geological Societies to arrange for its own program. In general, it will be desirable that the contributions from members of the Section be included in the main program rather than being allotted to a separate session.

4.03 At the time of the Annual Meeting, a Business Meeting shall be held for the transaction of Section business.

### ARTICLE 5. — AMENDMENT OF BYLAWS

5.01 These Bylaws may be amended by a two-thirds vote of returned mail ballots received by the Secretary sixty (60) days after proposal of amendments with provision for vote is mailed to the members. Any proposed amendments must have the approval of a majority of the Council before being submitted to the members.

5.02 A petition containing the signatures of twenty (20) active members is considered sufficient to bring before the Council a proposed change in the Bylaws. A majority vote of the Council is

also considered sufficient to initiate a proposed change.

## ARTICLE 6. — DUES

6.01 The fiscal year of the Section shall commence on October 1 and expire on September 30 of the following year.

6.02 The annual dues of the members and associates of the Section shall be eight dollars (\$8.00)†. Penalty of fifty cents (.50) shall be assessed for late payments. The fifty cents (.50) late penalty shall be waived upon payment of dues for two more years.

6.03 A bill for dues shall be mailed to each member and associate before January 1 of each year. Members and Associates who have not paid their annual dues by April 1 shall be dropped from the membership roles.

6.04 Members and Associates dropped for non-payment of dues may apply to the Council for reinstatement and be reinstated by majority vote of the Council.

6.05 Members or Associates may, at their discretion, pay their annual dues in advance for periods of up to five (5) years.

## ARTICLE 7. — FINANCIAL PROCEDURE

7.01 No officer or member shall enter into contract or disburse any of the Section's funds, without the co-signature of a member of the Council. Disbursal of a sum in excess of Five Hundred Dollars (\$500.00) must be approved by a majority of the Council.

## ARTICLE 8. — ELECTIONS

8.01 The President shall appoint two (2) nominating committees, instructing each committee to submit nominations for President-Elect, Vice President, Secretary, and Treasurer. These nominations shall be in the Secretary's hands before July 15. If desired, the same person may be nominated by the two committees for the offices of Secretary and Treasurer, but the nominations for President-Elect and Vice President shall not include the names of the same person on the two slates. The nominations of the first committee to file its report will have precedence in case of overlapping nominations, and the other committee shall then be requested to change its nomination. A candidate for office must be an active member and reside in the Gulf Coast at the time of his nomination.

8.02 Ballots containing the nominations for officers, arranged alphabetically under each office, shall be prepared by the Secretary and mailed to each member of the Section on or before July 15. The ballots received by the Secretary before September 15 shall be counted by him. Receipt of a plurality of the votes cast for any office shall constitute election. In case of a tie vote, members of the Council shall cast one additional deciding vote.

8.03 Results of balloting shall be announced at the Annual Meeting, and the new officers shall enter upon duty at the adjournment of the Meeting.

## ARTICLE 9. — PUBLICATIONS

9.01 The Section Editor, appointed by the President, shall actively solicit papers from the Section membership for presentation at the Annual Meeting. He shall cooperate with the editor of the Gulf Coast Association of Geological Societies' *Transactions* volume in preparing papers delivered at the meeting for publication in this volume. He shall cooperate with the editors of the Society of Paleontologists and Mineralogists' journals by helping to arrange for publication in these periodicals of suitable papers which come to his attention.

9.02 Members of the Section may purchase one copy of each Section publication at a discount rate of 20 percent off the advertised price.

## ARTICLE 10. — BUSINESS REPRESENTATIVES

10.01 The President shall appoint one representative from each group of members in each local geological society affiliated with the Gulf Coast Association of Geological Societies and in other localities as needed. Each representative shall have an up-to-date list of the members residing in his vicinity. He will notify these members concerning any matter of Section policy which may be relayed to him by the President and shall have the authority to convene a meeting of those members to determine their views concerning Section affairs. He will report the results of such meetings to the President of the Section. He will cooperate with the Section Editor in the soliciting of papers to be presented at the Annual Meeting and with the Chairman of the Membership Committee in recruiting new members for the Section.

## ARTICLE 11. — AUDIT

11.01 The President shall appoint an Auditing Committee which shall review the accounts presented by the Treasurer. The approval of the Treasurer's books by the committee shall be required before his final report will be accepted. The Treasurer shall submit a provisional report at the Annual Meeting, and his final audit shall be accomplished not later than 30 days thereafter.

The Constitution of the GCS/SEPM was originally adopted in 1954 and was amended in 1960, 1962, 1966, 1969, 1971, 1972, 1974, and 1981. The Section was incorporated under the laws of the State of Texas in 1981, and these Bylaws were adopted at that time in place of the original Constitution and its amendments. They were amended in 1984. These Bylaws embody all of the provisions of the original Constitution and its amendments.

---

† Amended by ballot concluded August 15, 1984.